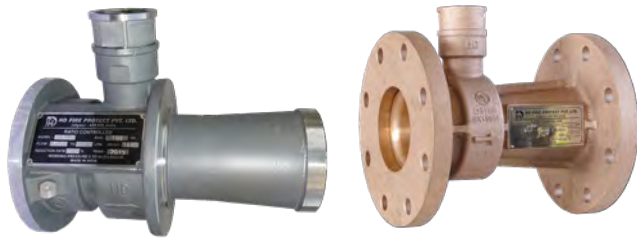
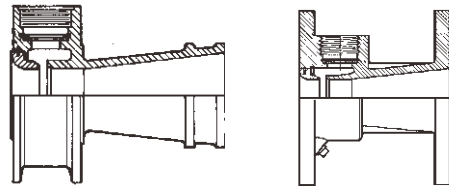


Foam ratio controller (Foam proportioner)

Foam ratio controller is a modified venturi foam proportioner used to accurately meter foam concentrate into the firefighting water stream. It operates in conjunction with bladder tank or balanced pressure proportioning pump skid.



- Certificate: UL Listed / FM Approved
- Standard: NFPA 11, UL 162, EN 13565, GB 20031
- Connection: Grooved, wafer, or flanged ANSI B16.1 Class 125
- Temperature: 1.7°C to 49°C
- W. pressure: 30 ~ 175 psi
- Surface: Rough bronze, shotblasted SS, etc.



Main parts and material

Body and inlet nozzle	Bronze, SS304, or SS316	Metering orifice	Brass, sized to the certain foam concentrate
Retaining ring	SS	/	/

Available size (Source 1 with UL/FM)

Size	Foam concentrate inlet	Material	Flow at SFFF 3% (gpm)		Flow at AR-SFFF 3x3% (gpm)		Working pressure (psi)	Ref. No.
			UL	FM	UL	FM		
2" GRV	1-1/2" GRV	Bronze	/	95 ~ 309	/	93 ~ 300	30 ~ 175	B0601 (UL/FM)
2-1/2" GRV	1-1/2" GRV	Bronze	/	155 ~ 502	/	165 ~ 475	30 ~ 175	B0602 (UL/FM)
3" GRV	1-1/2" GRV	Bronze	/	360 ~ 775	/	285 ~ 770	30 ~ 175	B0603 (UL/FM)
4" GRV	2" GRV	Bronze	420 ~ 1515	370 ~ 1250	/	400 ~ 1350	30 ~ 175	B0604 (UL/FM)
6" GRV	2" GRV	Bronze	990 ~ 2670	845 ~ 2350	/	800 ~ 2400	30 ~ 175	B0605 (UL/FM)
8" GRV	2-1/2" GRV	Bronze	2000 ~ 5050	2010 ~ 4640	/	1900 ~ 4250	30 ~ 175	B0606 (UL/FM)
3" FLG	1-1/2" THD	Bronze	/	360 ~ 775	/	285 ~ 770	30 ~ 175	B0607 (UL/FM)
4" FLG	2" THD	Bronze	420 ~ 1515	370 ~ 1250	/	400 ~ 1350	30 ~ 175	B0608 (UL/FM)
6" FLG	2" THD	Bronze	990 ~ 2670	845 ~ 2350	/	800 ~ 2400	30 ~ 175	B0609 (UL/FM)
8" FLG	2-1/2" THD	Bronze	2000 ~ 5050	2010 ~ 4640	/	1900 ~ 4250	30 ~ 175	B0610 (UL/FM)

Note: Ratio controller is UL and FM when used with specific bladder tank, foam discharge device, and foam concentrate.

Foam ratio controller (Foam proportioner)

Available size (Source 2 with UL/FM)

Size	Foam concentrate inlet	Material	Flow at AFFF 3% (gpm)		Flow at AR-AFFF 3x3% (gpm)		Working pressure (psi)	Ref. No.
			UL	FM	UL	FM		
2-1/2" Wafer	1" THD	Bronze / SS	26 ~ 410	27 ~ 420	130 ~ 390	132 ~ 272	30 ~ 175	B0621 (UL/FM)
3" Wafer	1-1/2" THD	Bronze / SS	69 ~ 793	77 ~ 790	192 ~ 797	/	30 ~ 175	B0622 (UL/FM)
4" Wafer	1-1/2" THD	Bronze / SS	172 ~ 1585	159 ~ 1598	206 ~ 1585	478 ~ 1622	30 ~ 175	B0623 (UL/FM)
6" Wafer	2" THD	Bronze / SS	317 ~ 3170	317 ~ 3027	574 ~ 3080	1321 ~ 3249	30 ~ 175	B0624 (UL/FM)
8" Wafer	2-1/2" THD	Bronze / SS	726 ~ 4718	/	936 ~ 4451	/	30 ~ 175	B0625 (UL)
2-1/2" FLG	1" THD	Bronze / SS	26 ~ 410	27 ~ 420	130 ~ 390	132 ~ 272	30 ~ 175	B0626 (UL/FM)
3" FLG	1-1/2" THD	Bronze / SS	69 ~ 793	77 ~ 790	192 ~ 797	/	30 ~ 175	B0627 (UL/FM)
4" FLG	1-1/2" THD	Bronze / SS	172 ~ 1585	159 ~ 1598	206 ~ 1585	478 ~ 1622	30 ~ 175	B0628 (UL/FM)
6" FLG	2" THD	Bronze / SS	317 ~ 3170	317 ~ 3027	574 ~ 3080	1321 ~ 3249	30 ~ 175	B0629 (UL/FM)
8" FLG	2-1/2" THD	Bronze / SS	726 ~ 4718	/	936 ~ 4451	/	30 ~ 175	B0630 (UL)

Note: Ratio controller is UL and FM when used with specific bladder tank, foam discharge device, and foam concentrate.