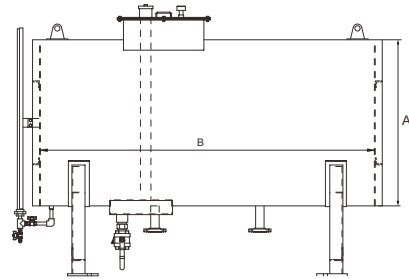


Atmospheric foam concentrate storage tank

Atmospheric foam concentrate storage tank is used with in-line foam inductor and in-line balance pressure foam proportioning system. It is suitable for storing AFFF, AR-AFFF or fluoroprotein foam concentrates.



- Certificate: ISO
- Standard: Refer to NFPA 11, UL 162, EN 13565, GB 20031
- Feature: Atmospheric type, horizontal or vertical configuration
- Temperature: No more than 50°C
- W. pressure: Non
- Surface: Red RAL3000 FBE coating, yellow, etc.



Main parts and material

Shell and expansion dome	SS304, SS316, or carbon steel with FRP lining	End	Flat, or dome
Standard accessories	Nozzle for fill, drain, suction, return connection. Sight gauge, air vent, lifting lug	Optional accessories	Ladder, lever switch, top platform, or customized nozzle connection

Available size

Capacity (Gal)	Inside height A (mm)	Inside length B (mm)	Foam concentrate	Outlet & return line connection	Working pressure (psi)	Ref. No.
53	550	925	0.5% ~ 6%	DN 40 FLG	/	B0301
66	595	990	0.5% ~ 6%	DN 40 FLG	/	B0302
79	610	1129	0.5% ~ 6%	DN 40 FLG	/	B0303
92	660	1129	0.5% ~ 6%	DN 40 FLG	/	B0304
106	705	1129	0.5% ~ 6%	DN 40 FLG	/	B0305
119	750	1129	0.5% ~ 6%	DN 40 FLG	/	B0306
132	790	1129	0.5% ~ 6%	DN 40 FLG	/	B0307
159	775	1410	0.5% ~ 6%	DN 40 FLG	/	B0308
172	805	1410	0.5% ~ 6%	DN 40 FLG	/	B0309
185	835	1410	0.5% ~ 6%	DN 40 FLG	/	B0310

Atmospheric foam concentrate storage tank

Available size

Capacity (Gal)	Inside height A (mm)	Inside length B (mm)	Foam concentrate	Outlet & return line connection	Working pressure (psi)	Ref. No.
198	865	1410	0.5% ~ 6%	DN 40 FLG	/	B0311
211	895	1410	0.5% ~ 6%	DN 40 FLG	/	B0312
225	920	1410	0.5% ~ 6%	DN 40 FLG	/	B0313
238	945	1410	0.5% ~ 6%	DN 40 FLG	/	B0314
251	970	1410	0.5% ~ 6%	DN 40 FLG	/	B0315
264	1000	1410	0.5% ~ 6%	DN 40 FLG	/	B0316
291	900	1910	0.5% ~ 6%	DN 40 FLG	/	B0317
304	920	1910	0.5% ~ 6%	DN 40 FLG	/	B0318
317	940	1910	0.5% ~ 6%	DN 40 FLG	/	B0319
330	960	1910	0.5% ~ 6%	DN 40 FLG	/	B0320
343	980	1910	0.5% ~ 6%	DN 40 FLG	/	B0321
357	995	1910	0.5% ~ 6%	DN 40 FLG	/	B0322
370	1015	1910	0.5% ~ 6%	DN 40 FLG	/	B0323
396	1050	1910	0.5% ~ 6%	DN 40 FLG	/	B0324
423	1085	1910	0.5% ~ 6%	DN 40 FLG	/	B0325
449	1120	1910	0.5% ~ 6%	DN 40 FLG	/	B0326
476	1150	1910	0.5% ~ 6%	DN 40 FLG	/	B0327
502	1185	1910	0.5% ~ 6%	DN 40 FLG	/	B0328
528	1215	1910	0.5% ~ 6%	DN 40 FLG	/	B0329
555	1225	1975	0.5% ~ 6%	DN 50 FLG	/	B0330
581	1250	1975	0.5% ~ 6%	DN 50 FLG	/	B0331
608	1275	1985	0.5% ~ 6%	DN 50 FLG	/	B0332
660	1275	2155	0.5% ~ 6%	DN 50 FLG	/	B0333
687	1300	2155	0.5% ~ 6%	DN 50 FLG	/	B0334
713	1325	2155	0.5% ~ 6%	DN 50 FLG	/	B0335
740	1325	2235	0.5% ~ 6%	DN 50 FLG	/	B0336
766	1350	2230	0.5% ~ 6%	DN 50 FLG	/	B0337
793	1350	2320	0.5% ~ 6%	DN 50 FLG	/	B0338
859	1400	2350	0.5% ~ 6%	DN 50 FLG	/	B0339
925	1450	2350	0.5% ~ 6%	DN 50 FLG	/	B0340
1057	1500	2500	0.5% ~ 6%	DN 65 FLG	/	B0341
1123	1550	2480	0.5% ~ 6%	DN 65 FLG	/	B0342
1189	1550	2650	0.5% ~ 6%	DN 65 FLG	/	B0343
1255	1600	2600	0.5% ~ 6%	DN 65 FLG	/	B0344
1321	1600	2740	0.5% ~ 6%	DN 65 FLG	/	B0345
1387	1600	2800	0.5% ~ 6%	DN 65 FLG	/	B0346

Atmospheric foam concentrate storage tank

Available size

Capacity (Gal)	Inside height A (mm)	Inside length B (mm)	Foam concentrate	Outlet & return line connection	Working pressure (psi)	Ref. No.
1453	1600	3010	0.5% ~ 6%	DN 65 FLG	/	B0347
1519	1600	3150	0.5% ~ 6%	DN 65 FLG	/	B0348
1585	1625	3185	0.5% ~ 6%	DN 65 FLG	/	B0349
1717	1650	3350	0.5% ~ 6%	DN 65 FLG	/	B0350
1849	1700	3400	0.5% ~ 6%	DN 65 FLG	/	B0351
1981	1750	3440	0.5% ~ 6%	DN 65 FLG	/	B0352
2113	1780	3540	0.5% ~ 6%	DN 65 FLG	/	B0353
2245	1800	3680	0.5% ~ 6%	DN 65 FLG	/	B0354
2378	1840	3730	0.5% ~ 6%	DN 65 FLG	/	B0355
2510	1870	3810	0.5% ~ 6%	DN 65 FLG	/	B0356
2642	1900	3880	0.5% ~ 6%	DN 65 FLG	/	B0357