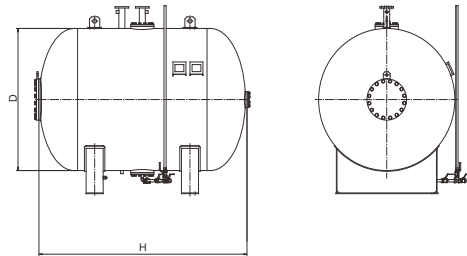


## Horizontal bladder tank (Bladder tank foam proportioning system)

Horizontal bladder tank is a pressure vessel with inside elastomeric bladder which stores foam concentrate and separates water. Foam concentrate is forced out of the bladder into flowing water to form foam solution through proportioning device.



- Certificate: UL Listed / FM Approved
- Standard: NFPA 11, UL 162, EN 13565, GB 20031
- Design: ASME Sec. VIII Div.1, or EN 13445
- Temperature: 1.7°C to 49°C
- W. pressure: 175 psi (12 bar), or 232 psi (16 bar)
- Surface: Red RAL3000 FBE coating



### Main parts and material

<b>Shell and head</b>	Carbon steel ASME SA-516 Gr.70, or SS	<b>Bladder</b>	Reinforced NBR and EPDM
<b>Ratio controller (Proportioner)</b>	Pre-assembled, size 2", 2.5", 3", 4", 6", 8", grooved, wafer or flanged connection	<b>External piping</b>	Carbon steel water line, brass or SS foam concentrate line
<b>Level indicator</b>	PVC sight tube	<b>Standard Accessories</b>	Foam concentrate control valve (CCV), bladder tank filling kit, etc.

### Available size (Source 1 with UL/FM)

Capacity (gal)	Diameter D (mm)	Height H (mm)	Foam concentrate	Ratio controller (Proportioner)	Working pressure (psi)	Ref. No.
50	500	1406	SFFF 3%, AR-SFFF 3x3%	2" ~ 8"	175 / 232	B0201-VK (UL/FM)
75	600	1456	SFFF 3%, AR-SFFF 3x3%	2" ~ 8"	175 / 232	B0202-VK (UL/FM)
100	600	1706	SFFF 3%, AR-SFFF 3x3%	2" ~ 8"	175 / 232	B0203-VK (UL/FM)
150	800	1536	SFFF 3%, AR-SFFF 3x3%	2" ~ 8"	175 / 232	B0204-VK (UL/FM)
200	800	1836	SFFF 3%, AR-SFFF 3x3%	2" ~ 8"	175 / 232	B0205-VK (UL/FM)
250	1000	1624	SFFF 3%, AR-SFFF 3x3%	2" ~ 8"	175 / 232	B0206-VK (UL/FM)
300	1000	1924	SFFF 3%, AR-SFFF 3x3%	2" ~ 8"	175 / 232	B0207-VK (UL/FM)
350	1000	2024	SFFF 3%, AR-SFFF 3x3%	2" ~ 8"	175 / 232	B0208-VK (UL/FM)
400	1000	2274	SFFF 3%, AR-SFFF 3x3%	2" ~ 8"	175 / 232	B0209-VK (UL/FM)
450	1100	2130	SFFF 3%, AR-SFFF 3x3%	2" ~ 8"	175 / 232	B0210-VK (UL/FM)

## Horizontal bladder tank (Bladder tank foam proportioning system)

### Available size (Source 1 with UL/FM)

Capacity (gal)	Diameter D (mm)	Height H (mm)	Foam concentrate	Ratio controller (Proportioner)	Working pressure (psi)	Ref. No.
500	1100	2430	SFFF 3%, AR-SFFF 3x3%	2" ~ 8"	175 / 232	B0211-VK (UL/FM)
600	1200	2333	SFFF 3%, AR-SFFF 3x3%	2" ~ 8"	175 / 232	B0212-VK (UL/FM)
700	1300	2387	SFFF 3%, AR-SFFF 3x3%	2" ~ 8"	175 / 232	B0213-VK (UL/FM)
800	1300	2737	SFFF 3%, AR-SFFF 3x3%	2" ~ 8"	175 / 232	B0214-VK (UL/FM)
900	1400	2801	SFFF 3%, AR-SFFF 3x3%	2" ~ 8"	175 / 232	B0215-VK (UL/FM)
1000	1450	2728	SFFF 3%, AR-SFFF 3x3%	2" ~ 8"	175 / 232	B0216-VK (UL/FM)
1100	1450	2928	SFFF 3%, AR-SFFF 3x3%	2" ~ 8"	175 / 232	B0217-VK (UL/FM)
1200	1500	2957	SFFF 3%, AR-SFFF 3x3%	2" ~ 8"	175 / 232	B0218-VK (UL/FM)
1300	1600	2910	SFFF 3%, AR-SFFF 3x3%	2" ~ 8"	175 / 232	B0219-VK (UL/FM)
1400	1600	3160	SFFF 3%, AR-SFFF 3x3%	2" ~ 8"	175 / 232	B0220-VK (UL/FM)
1500	1750	2920	SFFF 3%, AR-SFFF 3x3%	2" ~ 8"	175 / 232	B0221-VK (UL/FM)
1600	1750	3020	SFFF 3%, AR-SFFF 3x3%	2" ~ 8"	175 / 232	B0222-VK (UL/FM)
1700	1800	3047	SFFF 3%, AR-SFFF 3x3%	2" ~ 8"	175 / 232	B0223-VK (UL/FM)
1800	2000	2652	SFFF 3%, AR-SFFF 3x3%	2" ~ 8"	175 / 232	B0224-VK (UL/FM)
1900	2000	2752	SFFF 3%, AR-SFFF 3x3%	2" ~ 8"	175 / 232	B0225-VK (UL/FM)
2000	2000	2902	SFFF 3%, AR-SFFF 3x3%	2" ~ 8"	175 / 232	B0226-VK (UL/FM)
2200	2000	3252	SFFF 3%, AR-SFFF 3x3%	2" ~ 8"	175 / 232	B0227-VK (UL/FM)
2400	2000	3402	SFFF 3%, AR-SFFF 3x3%	2" ~ 8"	175 / 232	B0228-VK (UL/FM)
2600	2000	3752	SFFF 3%, AR-SFFF 3x3%	2" ~ 8"	175 / 232	B0229-VK (UL/FM)
2800	2000	4052	SFFF 3%, AR-SFFF 3x3%	2" ~ 8"	175 / 232	B0230-VK (UL/FM)
3000	2000	4252	SFFF 3%, AR-SFFF 3x3%	2" ~ 8"	175 / 232	B0231-VK (UL/FM)
3200	2000	4552	SFFF 3%, AR-SFFF 3x3%	2" ~ 8"	175 / 232	B0232-VK (UL/FM)
3400	2000	4752	SFFF 3%, AR-SFFF 3x3%	2" ~ 8"	175 / 232	B0233-VK (UL/FM)
3600	2000	5002	SFFF 3%, AR-SFFF 3x3%	2" ~ 8"	175 / 232	B0234-VK (UL/FM)
3800	2000	5202	SFFF 3%, AR-SFFF 3x3%	2" ~ 8"	175 / 232	B0235-VK (UL/FM)
4000	2000	5552	SFFF 3%, AR-SFFF 3x3%	2" ~ 8"	175 / 232	B0236-VK (UL/FM)
4250	2000	5852	SFFF 3%, AR-SFFF 3x3%	2" ~ 8"	175 / 232	B0237-VK (UL/FM)
4500	2000	6152	SFFF 3%, AR-SFFF 3x3%	2" ~ 8"	175 / 232	B0238-VK (UL/FM)
4750	2000	6502	SFFF 3%, AR-SFFF 3x3%	2" ~ 8"	175 / 232	B0239-VK (UL/FM)
5000	2000	6802	SFFF 3%, AR-SFFF 3x3%	2" ~ 8"	175 / 232	B0240-VK (UL/FM)
5250	2000	7152	SFFF 3%, AR-SFFF 3x3%	2" ~ 8"	175 / 232	B0241-VK (UL/FM)

**Note:**

1. The bladder tank is supplied empty with pre-installed bladder, no foam concentrate inside.
2. It is UL and FM when used with specified foam concentrate and discharge device.
3. Above standard accessories are equipped with the tank. Optional accessories need be purchased separately, including ladder, work platform, sunshield, anchor fixing bolts, etc.

## Horizontal bladder tank (Bladder tank foam proportioning system)

### Available size (Source 2 with UL/FM)

Capacity (gal)	Diameter D (mm)	Height H (mm)	Foam concentrate	Ratio controller (Proportioner)	Working pressure (psi)	Ref. No.
53	600	1146	AFFF 3%, AR-AFFF 3x3%	2.5" ~ 8"	175	B0201-HD (UL/FM)
66	600	1341	AFFF 3%, AR-AFFF 3x3%	2.5" ~ 8"	175	B0202-HD (UL/FM)
75	600	1535	AFFF 3%, AR-AFFF 3x3%	2.5" ~ 8"	175	B0203-HD (UL/FM)
92	600	1730	AFFF 3%, AR-AFFF 3x3%	2.5" ~ 8"	175	B0204-HD (UL/FM)
100	600	1924	AFFF 3%, AR-AFFF 3x3%	2.5" ~ 8"	175	B0205-HD (UL/FM)
120	750	1519	AFFF 3%, AR-AFFF 3x3%	2.5" ~ 8"	175	B0206-HD (UL/FM)
135	750	1644	AFFF 3%, AR-AFFF 3x3%	2.5" ~ 8"	175	B0207-HD (UL/FM)
145	750	1768	AFFF 3%, AR-AFFF 3x3%	2.5" ~ 8"	175	B0208-HD (UL/FM)
150	750	1893	AFFF 3%, AR-AFFF 3x3%	2.5" ~ 8"	175	B0209-HD (UL/FM)
175	850	1678	AFFF 3%, AR-AFFF 3x3%	2.5" ~ 8"	175	B0210-HD (UL/FM)
185	850	1775	AFFF 3%, AR-AFFF 3x3%	2.5" ~ 8"	175	B0211-HD (UL/FM)
200	850	1872	AFFF 3%, AR-AFFF 3x3%	2.5" ~ 8"	175	B0212-HD (UL/FM)
215	850	1968	AFFF 3%, AR-AFFF 3x3%	2.5" ~ 8"	175	B0213-HD (UL/FM)
225	850	2065	AFFF 3%, AR-AFFF 3x3%	2.5" ~ 8"	175	B0214-HD (UL/FM)
240	850	2162	AFFF 3%, AR-AFFF 3x3%	2.5" ~ 8"	175	B0215-HD (UL/FM)
250	850	2259	AFFF 3%, AR-AFFF 3x3%	2.5" ~ 8"	175	B0216-HD (UL/FM)
265	1000	1848	AFFF 3%, AR-AFFF 3x3%	2.5" ~ 8"	175	B0217-HD (UL/FM)
290	1000	1988	AFFF 3%, AR-AFFF 3x3%	2.5" ~ 8"	175	B0218-HD (UL/FM)
300	1000	2128	AFFF 3%, AR-AFFF 3x3%	2.5" ~ 8"	175	B0219-HD (UL/FM)
325	1000	2268	AFFF 3%, AR-AFFF 3x3%	2.5" ~ 8"	175	B0220-HD (UL/FM)
350	1000	2408	AFFF 3%, AR-AFFF 3x3%	2.5" ~ 8"	175	B0221-HD (UL/FM)
375	1000	2548	AFFF 3%, AR-AFFF 3x3%	2.5" ~ 8"	175	B0222-HD (UL/FM)
400	1000	2689	AFFF 3%, AR-AFFF 3x3%	2.5" ~ 8"	175	B0223-HD (UL/FM)
450	1000	2829	AFFF 3%, AR-AFFF 3x3%	2.5" ~ 8"	175	B0224-HD (UL/FM)
475	1200	2234	AFFF 3%, AR-AFFF 3x3%	2.5" ~ 8"	175	B0225-HD (UL/FM)
500	1200	2331	AFFF 3%, AR-AFFF 3x3%	2.5" ~ 8"	175	B0226-HD (UL/FM)
530	1200	2428	AFFF 3%, AR-AFFF 3x3%	2.5" ~ 8"	175	B0227-HD (UL/FM)
580	1200	2623	AFFF 3%, AR-AFFF 3x3%	2.5" ~ 8"	175	B0228-HD (UL/FM)
600	1200	2817	AFFF 3%, AR-AFFF 3x3%	2.5" ~ 8"	175	B0229-HD (UL/FM)
700	1200	3012	AFFF 3%, AR-AFFF 3x3%	2.5" ~ 8"	175	B0230-HD (UL/FM)
750	1200	3206	AFFF 3%, AR-AFFF 3x3%	2.5" ~ 8"	175	B0231-HD (UL/FM)
800	1400	2659	AFFF 3%, AR-AFFF 3x3%	2.5" ~ 8"	175	B0232-HD (UL/FM)
850	1400	2838	AFFF 3%, AR-AFFF 3x3%	2.5" ~ 8"	175	B0233-HD (UL/FM)
900	1400	3016	AFFF 3%, AR-AFFF 3x3%	2.5" ~ 8"	175	B0234-HD (UL/FM)
1000	1400	3195	AFFF 3%, AR-AFFF 3x3%	2.5" ~ 8"	175	B0235-HD (UL/FM)
1050	1400	3374	AFFF 3%, AR-AFFF 3x3%	2.5" ~ 8"	175	B0236-HD (UL/FM)

## Horizontal bladder tank (Bladder tank foam proportioning system)

### Available size (Source 2 with UL/FM)

Capacity (gal)	Diameter D (mm)	Height H (mm)	Foam concentrate	Ratio controller (Proportioner)	Working pressure (psi)	Ref. No.
1100	1400	3552	AFFF 3%, AR-AFFF 3x3%	2.5" ~ 8"	175	B0237-HD (UL/FM)
1200	1400	3731	AFFF 3%, AR-AFFF 3x3%	2.5" ~ 8"	175	B0238-HD (UL/FM)
1250	1400	3910	AFFF 3%, AR-AFFF 3x3%	2.5" ~ 8"	175	B0239-HD (UL/FM)
1300	1600	3287	AFFF 3%, AR-AFFF 3x3%	2.5" ~ 8"	175	B0240-HD (UL/FM)
1400	1600	3424	AFFF 3%, AR-AFFF 3x3%	2.5" ~ 8"	175	B0241-HD (UL/FM)
1450	1600	3561	AFFF 3%, AR-AFFF 3x3%	2.5" ~ 8"	175	B0242-HD (UL/FM)
1500	1600	3697	AFFF 3%, AR-AFFF 3x3%	2.5" ~ 8"	175	B0243-HD (UL/FM)
1600	1600	3834	AFFF 3%, AR-AFFF 3x3%	2.5" ~ 8"	175	B0244-HD (UL/FM)
1650	1600	3971	AFFF 3%, AR-AFFF 3x3%	2.5" ~ 8"	175	B0245-HD (UL/FM)
1700	1600	4108	AFFF 3%, AR-AFFF 3x3%	2.5" ~ 8"	175	B0246-HD (UL/FM)
1800	1600	4245	AFFF 3%, AR-AFFF 3x3%	2.5" ~ 8"	175	B0247-HD (UL/FM)
1850	1600	4381	AFFF 3%, AR-AFFF 3x3%	2.5" ~ 8"	175	B0248-HD (UL/FM)
1900	1600	4518	AFFF 3%, AR-AFFF 3x3%	2.5" ~ 8"	175	B0249-HD (UL/FM)
2000	1600	4655	AFFF 3%, AR-AFFF 3x3%	2.5" ~ 8"	175	B0250-HD (UL/FM)
2050	1725	4220	AFFF 3%, AR-AFFF 3x3%	2.5" ~ 8"	175	B0251-HD (UL/FM)
2100	1725	4337	AFFF 3%, AR-AFFF 3x3%	2.5" ~ 8"	175	B0252-HD (UL/FM)
2200	1725	4455	AFFF 3%, AR-AFFF 3x3%	2.5" ~ 8"	175	B0253-HD (UL/FM)
2250	1725	4573	AFFF 3%, AR-AFFF 3x3%	2.5" ~ 8"	175	B0254-HD (UL/FM)
2300	1725	4690	AFFF 3%, AR-AFFF 3x3%	2.5" ~ 8"	175	B0255-HD (UL/FM)
2400	1725	4808	AFFF 3%, AR-AFFF 3x3%	2.5" ~ 8"	175	B0256-HD (UL/FM)
2450	1725	4926	AFFF 3%, AR-AFFF 3x3%	2.5" ~ 8"	175	B0257-HD (UL/FM)
2500	1725	5043	AFFF 3%, AR-AFFF 3x3%	2.5" ~ 8"	175	B0258-HD (UL/FM)
2600	1725	5161	AFFF 3%, AR-AFFF 3x3%	2.5" ~ 8"	175	B0259-HD (UL/FM)
2700	1725	5279	AFFF 3%, AR-AFFF 3x3%	2.5" ~ 8"	175	B0260-HD (UL/FM)
2800	1725	5514	AFFF 3%, AR-AFFF 3x3%	2.5" ~ 8"	175	B0261-HD (UL/FM)
2900	1725	5749	AFFF 3%, AR-AFFF 3x3%	2.5" ~ 8"	175	B0262-HD (UL/FM)
3000	1725	5985	AFFF 3%, AR-AFFF 3x3%	2.5" ~ 8"	175	B0263-HD (UL/FM)
3100	1725	6220	AFFF 3%, AR-AFFF 3x3%	2.5" ~ 8"	175	B0264-HD (UL/FM)
3300	1725	6455	AFFF 3%, AR-AFFF 3x3%	2.5" ~ 8"	175	B0265-HD (UL/FM)
3400	1725	6691	AFFF 3%, AR-AFFF 3x3%	2.5" ~ 8"	175	B0266-HD (UL/FM)
3500	1725	6926	AFFF 3%, AR-AFFF 3x3%	2.5" ~ 8"	175	B0267-HD (UL/FM)
3700	1725	7162	AFFF 3%, AR-AFFF 3x3%	2.5" ~ 8"	175	B0268-HD (UL/FM)
3800	1725	7397	AFFF 3%, AR-AFFF 3x3%	2.5" ~ 8"	175	B0269-HD (UL/FM)
3900	1725	7632	AFFF 3%, AR-AFFF 3x3%	2.5" ~ 8"	175	B0270-HD (UL/FM)

**Note:**

1. The bladder tank is supplied empty with pre-installed bladder, no foam concentrate inside.
2. It is UL and FM when used with specified foam concentrate and discharge device.
3. Above standard accessories are equipped with the tank. Optional accessories need be purchased separately, including ladder, work platform, sunshield, anchor fixing bolts, etc.

## Horizontal bladder tank (Bladder tank foam proportioning system)

### Available size (Source 3 with ISO)

Capacity (gal)	Diameter D (mm)	Height H (mm)	Foam concentrate	Ratio controller (Proportioner)	Working pressure (psi)	Ref. No.
264	1000	1600	3%, 6%	2" ~ 8"	175	B0201-TP (ISO)
396	1100	1650	3%, 6%	2" ~ 8"	175	B0202-TP (ISO)
528	1200	1750	3%, 6%	2" ~ 8"	175	B0203-TP (ISO)
660	1200	1800	3%, 6%	2" ~ 8"	175	B0204-TP (ISO)
793	1400	1950	3%, 6%	2" ~ 8"	175	B0205-TP (ISO)
1057	1400	1950	3%, 6%	2" ~ 8"	175	B0206-TP (ISO)
1321	1600	2250	3%, 6%	2" ~ 8"	175	B0207-TP (ISO)
1585	1600	2150	3%, 6%	2" ~ 8"	175	B0208-TP (ISO)
2113	1800	2350	3%, 6%	2" ~ 8"	175	B0209-TP (ISO)
2642	2000	2800	3%, 6%	2" ~ 8"	175	B0210-TP (ISO)

**Note:**

1. The bladder tank is supplied empty with pre-installed bladder, no foam concentrate inside.
2. Above standard accessories are equipped with the tank. Optional accessories need be purchased separately, including ladder, work platform, sunshield, anchor fixing bolts, etc.