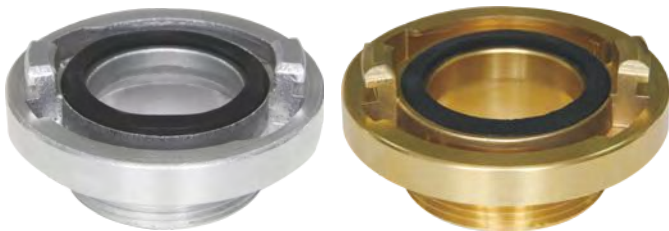


Storz adapter with female thread

- Certificate: ISO
- Standard: DIN 14306 / 07 / 08 / 09
- Material: Aluminum / brass / stainless steel
- Feature: Storz to threaded
- Surface: Anodized / rough brass, etc.

Available size

| Size | Material | Abbreviation | Lug KA (mm) | Female threaded end | Working pressure (bar) | Ref. No. |
|--------------|-----------------|--------------|-------------|---------------------------|------------------------|----------|
| 1.5" | AL / brass / SS | Storz 38 | 51 | BSPP (G) / NH / NPT, 1.5" | 16 | FE5221 |
| 2" | AL / brass / SS | Storz C 52 | 66 | BSPP (G) / NH / NPT, 2" | 16 | FE5222 |
| 2.5" | AL / brass / SS | Storz 65 | 81 | BSPP (G) / NH / NPT, 2.5" | 16 | FE5223 |
| 3" | AL / brass / SS | Storz B 75 | 89 | BSPP (G) / NH / NPT, 3" | 16 | FE5224 |
| 3" x 2.5" | AL / brass / SS | Storz B 75 | 89 | BSPP (G) / NH / NPT, 2.5" | 16 | FE5225 |
| 4" | AL / brass / SS | Storz 100 | 115 | BSPP (G) / NH / NPT, 4" | 16 | FE5226 |
| 4.25" x 4.5" | AL / brass / SS | Storz A 110 | 133 | BSPP (G) / NH / NPT, 4.5" | 16 | FE5227 |



Storz adapter with male thread

- Certificate: ISO
- Standard: DIN 14306 / 07 / 08 / 09
- Material: Aluminum / brass / stainless steel
- Feature: Storz to threaded
- Surface: Anodized / rough brass, etc.

Available size

| Size | Material | Abbreviation | Lug KA (mm) | Male threaded end | Working pressure (bar) | Ref. No. |
|-------------|-----------------|--------------|-------------|---------------------------|------------------------|----------|
| 1.5" | AL / brass / SS | Storz 38 | 51 | BSPP (G) / NH / NPT, 1.5" | 16 | FE5231 |
| 2" | AL / brass / SS | Storz C 52 | 66 | BSPP (G) / NH / NPT, 2" | 16 | FE5232 |
| 2.5" | AL / brass / SS | Storz 65 | 81 | BSPP (G) / NH / NPT, 2.5" | 16 | FE5233 |
| 2.5" x 1.5" | AL / brass / SS | Storz 65 | 81 | BSPP (G) / NH / NPT, 1.5" | 16 | FE5234 |
| 3" | AL / brass / SS | Storz B 75 | 89 | BSPP (G) / NH / NPT, 3" | 16 | FE5235 |
| 4" | AL / brass / SS | Storz 100 | 115 | BSPP (G) / NH / NPT, 4" | 16 | FE5236 |
| 4.25" | AL / brass / SS | Storz A 110 | 133 | BSPP (G) / NH / NPT, 4" | 16 | FE5237 |