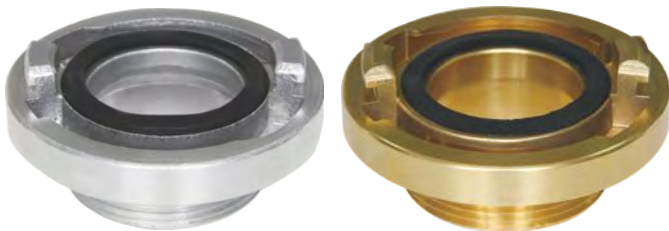


Storz adapter with female thread

- Certificate: ISO
- Standard: DIN 14306 / 07 / 08 / 09
- Material: Aluminum / brass / stainless steel
- Feature: Storz to threaded
- Surface: Anodized / rough brass, etc.

Available size

Size	Material	Abbreviation	Lug KA (mm)	Female threaded end	Working pressure (bar)	Ref. No.
1.5"	AL / brass / SS	Storz 38	51	BSPP (G) / NH / NPT, 1.5"	16	FE5221
2"	AL / brass / SS	Storz C 52	66	BSPP (G) / NH / NPT, 2"	16	FE5222
2.5"	AL / brass / SS	Storz 65	81	BSPP (G) / NH / NPT, 2.5"	16	FE5223
3"	AL / brass / SS	Storz B 75	89	BSPP (G) / NH / NPT, 3"	16	FE5224
3" x 2.5"	AL / brass / SS	Storz B 75	89	BSPP (G) / NH / NPT, 2.5"	16	FE5225
4"	AL / brass / SS	Storz 100	115	BSPP (G) / NH / NPT, 4"	16	FE5226
4.25" x 4.5"	AL / brass / SS	Storz A 110	133	BSPP (G) / NH / NPT, 4.5"	16	FE5227



Storz adapter with male thread

- Certificate: ISO
- Standard: DIN 14306 / 07 / 08 / 09
- Material: Aluminum / brass / stainless steel
- Feature: Storz to threaded
- Surface: Anodized / rough brass, etc.

Available size

Size	Material	Abbreviation	Lug KA (mm)	Male threaded end	Working pressure (bar)	Ref. No.
1.5"	AL / brass / SS	Storz 38	51	BSPP (G) / NH / NPT, 1.5"	16	FE5231
2"	AL / brass / SS	Storz C 52	66	BSPP (G) / NH / NPT, 2"	16	FE5232
2.5"	AL / brass / SS	Storz 65	81	BSPP (G) / NH / NPT, 2.5"	16	FE5233
2.5" x 1.5"	AL / brass / SS	Storz 65	81	BSPP (G) / NH / NPT, 1.5"	16	FE5234
3"	AL / brass / SS	Storz B 75	89	BSPP (G) / NH / NPT, 3"	16	FE5235
4"	AL / brass / SS	Storz 100	115	BSPP (G) / NH / NPT, 4"	16	FE5236
4.25"	AL / brass / SS	Storz A 110	133	BSPP (G) / NH / NPT, 4"	16	FE5237