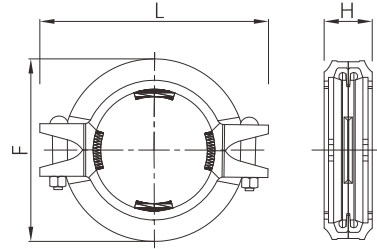


Quick flexible grooved coupling



- Certificate: UL Listed
- Standard: ANSI / UL 213
- Housing: Ductile iron ASTM A536, 65-45-12
- Bolt & nut: Carbon steel, detail as G92 ~ G96
- Gasket: EPDM, nitrile, silicone rubber, etc.
- Rated pressure: 300 ~ 500 psi
- Surface: Red painting / hot dip galvanized



Available size

Size		Dimension (mm)				Bolting (n x bolt size)		Ref. No.
Inch	DN	mm	F	L	H	ANSI	EN	
1-1/4"	32	42.4	65	108	47	2 - 3/8" x 60	2 - M10 x 57	G5802
1-1/2"	40	48.3	72	115	47	2 - 3/8" x 60	2 - M10 x 57	G5803
2"	50	60.3	85	126	48	2 - 3/8" x 60	2 - M10 x 57	G5804
2-1/2"	65	73.0	97	140	48	2 - 3/8" x 60	2 - M10 x 57	G5805
2-1/2"	65	76.1	100	140	48	2 - 3/8" x 60	2 - M10 x 57	G5806
3"	80	88.9	112	160	48	2 - 3/8" x 60	2 - M10 x 63	G5807
4"	100	114.3	138	194	50	2 - 1/2" x 65	2 - M12 x 70	G5808
5"	125	139.7	168	226	50	2 - 1/2" x 65	2 - M12 x 70	G5809
5"	125	141.3	170	228	50	2 - 1/2" x 65	2 - M12 x 70	G5810
6"	150	165.1	191	249	51	2 - 1/2" x 80	2 - M12 x 82	G5811
6"	150	168.3	198	257	51	2 - 1/2" x 80	2 - M12 x 82	G5812
8"	200	219.1	252	323	61	2 - 5/8" x 85	2 - M16 x 89	G5813