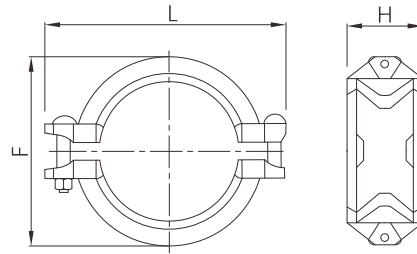


# Quikcoup one bolt rigid grooved coupling



- Certificate: UL Listed / FM Approved
- Standard: ANSI / UL 213
- Housing: Ductile iron ASTM A536, 65-45-12
- Bolt & nut: Carbon steel, detail as G92 ~ G96
- Gasket: EPDM, nitrile, silicone rubber, etc.
- Rated pressure: 300 ~ 500 psi
- Surface: Red painting / hot dip galvanized



## Available size

Size			Dimension (mm)			Bolting (n x bolt size)		Ref. No.
Inch	DN	mm	F	L	H	ANSI	EN	
1"	25	33.7	57	99	48	1 - 3/8" x 55	1 - M10 x 55	G5701
1-1/4"	32	42.4	64	108	48	1 - 3/8" x 60	1 - M10 x 60	G5702
1-1/2"	40	48.3	70	114	48	1 - 3/8" x 60	1 - M10 x 60	G5703
2"	50	60.3	84	128	48	1 - 3/8" x 65	1 - M10 x 65	G5704
2-1/2"	65	73.0	96	140	48	1 - 3/8" x 70	1 - M10 x 70	G5705
2-1/2"	65	76.1	100	144	48	1 - 3/8" x 70	1 - M10 x 70	G5706
3"	80	88.9	114	168	48	1 - 1/2" x 80	1 - M12 x 80	G5707
4"	100	114.3	143	194	50	1 - 1/2" x 80	1 - M12 x 80	G5708
5"	125	139.7	172	228	50	1 - 1/2" x 85	1 - M12 x 85	G5709
5"	125	141.3	174	230	50	1 - 1/2" x 85	1 - M12 x 85	G5710
6"	150	165.1	198	256	51	1 - 1/2" x 90	1 - M12 x 90	G5711
6"	150	168.3	201	259	51	1 - 1/2" x 90	1 - M12 x 90	G5712