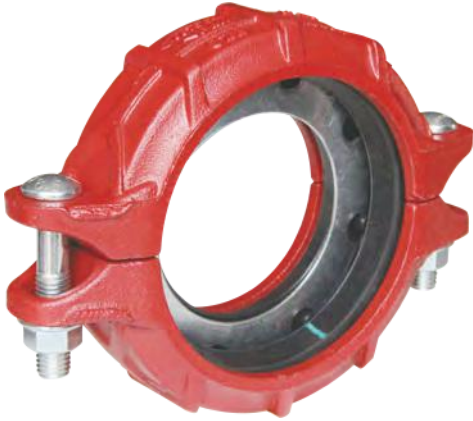
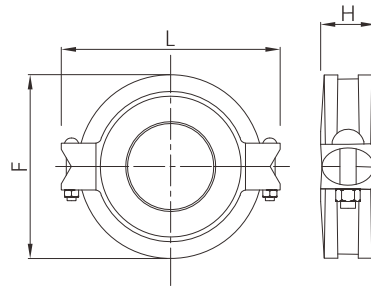


Reducing flexible grooved coupling



- Certificate: UL Listed / FM Approved
- Standard: ANSI / UL 213
- Housing: Ductile iron ASTM A536, 65-45-12
- Bolt & nut: Carbon steel, detail as G92 ~ G96
- Gasket: EPDM, nitrile, silicone rubber, etc.
- Rated pressure: 300 ~ 500 psi
- Surface: Red painting / hot dip galvanized



Available size

Size			Dimension (mm)			Bolting (n x bolt size)		Ref. No.
Inch	DN	mm	F	L	H	ANSI	EN	
1-1/2" x 1-1/4"	40 x 32	48.3 x 42.4	74	111	44	2 - 3/8" x 45	2 - M10 x 45	G5501 (UL/FM)
2" x 1-1/2"	50 x 40	60.3 x 48.3	86	125	44	2 - 3/8" x 55	2 - M10 x 57	G5502 (UL/FM)
2-1/2" x 1"	65 x 25	73.0 x 33.7	100	138	45	2 - 3/8" x 55	2 - M10 x 57	G5503 (UL/FM)
2-1/2" x 1-1/2"	65 x 40	73.0 x 48.3	101	137	48	2 - 3/8" x 55	2 - M10 x 55	G5504 (UL/FM)
2-1/2" x 2"	65 x 50	73.0 x 60.3	100	138	45	2 - 3/8" x 55	2 - M10 x 57	G5505 (UL/FM)
2-1/2" x 1"	65 x 25	76.1 x 33.7	102	140	45	2 - 3/8" x 55	2 - M10 x 57	G5506 (UL/FM)
2-1/2" x 1-1/2"	65 x 40	76.1 x 48.3	102	140	45	2 - 3/8" x 55	2 - M10 x 57	G5507 (UL/FM)
2-1/2" x 2"	65 x 50	76.1 x 60.3	102	144	45	2 - 3/8" x 55	2 - M10 x 57	G5508 (UL/FM)
2-1/2" x 2-1/2"	65 x 65	76.1 x 73.0	100	141	47	2 - 3/8" x 55	2 - M10 x 55	G5509 (UL/FM)
3" x 1"	80 x 25	88.9 x 33.7	115	168	46	2 - 1/2" x 70	2 - M12 x 70	G5510 (UL/FM)
3" x 1-1/2"	80 x 40	88.9 x 48.3	120	164	48	2 - 1/2" x 65	2 - M12 x 65	G5511 (UL/FM)
3" x 2"	80 x 50	88.9 x 60.3	115	168	46	2 - 1/2" x 70	2 - M12 x 70	G5512 (UL/FM)
3" x 2-1/2"	80 x 65	88.9 x 73.0	115	168	46	2 - 1/2" x 70	2 - M12 x 70	G5513 (UL/FM)
3" x 2-1/2"	80 x 65	88.9 x 76.1	115	172	46	2 - 1/2" x 70	2 - M12 x 70	G5514 (UL/FM)
4" x 1"	100 x 25	114.3 x 33.7	144	198	50	2 - 1/2" x 70	2 - M12 x 70	G5515 (UL/FM)

Reducing flexible grooved coupling

Available size

Size			Dimension (mm)			Bolting (n x bolt size)		Ref. No.
Inch	DN	mm	F	L	H	ANSI	EN	
4" x 1-1/2"	100 x 40	114.3 x 48.3	150	195	49	2 - 1/2" x 65	2 - M12 x 65	G5516 (UL/FM)
4" x 2"	100 x 50	114.3 x 60.3	144	198	50	2 - 1/2" x 70	2 - M12 x 70	G5517 (UL/FM)
4" x 2-1/2"	100 x 65	114.3 x 73.0	144	198	50	2 - 1/2" x 70	2 - M12 x 70	G5518 (UL/FM)
4" x 2-1/2"	100 x 65	114.3 x 76.1	144	202	50	2 - 1/2" x 70	2 - M12 x 70	G5519 (UL/FM)
4" x 3"	100 x 80	114.3 x 88.9	148	198	50	2 - 1/2" x 70	2 - M12 x 70	G5520 (UL/FM)
6" x 3"	150 x 80	165.1 x 88.9	200	260	51	2 - 5/8" x 85	2 - M16 x 85	G5521 (FM)
6" x 4"	150 x 100	165.1 x 114.3	200	260	51	2 - 5/8" x 85	2 - M16 x 85	G5522 (UL/FM)
6" x 3"	150 x 80	168.3 x 88.9	200	268	51	2 - 5/8" x 85	2 - M16 x 85	G5523 (UL/FM)
6" x 4"	150 x 100	168.3 x 114.3	203	268	53	2 - 5/8" x 85	2 - M16 x 85	G5524 (UL/FM)
8" x 6"	200 x 150	219.1 x 165.1	257	335	60	2 - 3/4" x 115	2 - M20 x 115	G5525 (UL/FM)
8" x 6"	200 x 150	219.1 x 168.3	260	338	60	2 - 3/4" x 115	2 - M20 x 115	G5526 (UL/FM)