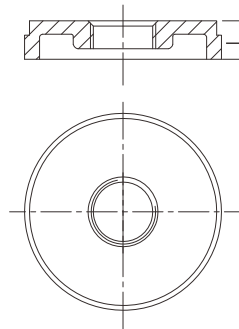


Grooved drain cap with concentric hole



- Certificate: UL Listed / FM Approved
- Standard: ANSI / UL 213C
- Material: Ductile iron ASTM A536, 65-45-12
- Centre hole: Female thread, NPT / BSPT
- Rated pressure: 300 ~ 500 psi
- Surface: Red painting / hot dip galvanized



Available size

Inch	Size		End to end L (mm)	Ref. No.
	DN	mm		
2" x 1"	50 x 25	60.3 x 33.7	24	G4101 (ISO)
2-1/2" x 1"	65 x 25	76.1 x 33.7	24	G4102 (ISO)
2-1/2" x 1-1/2"	65 x 40	76.1 x 48.3	24	G4103 (UL/FM)
2-1/2" x 2"	65 x 50	76.1 x 60.3	24	G4104 (ISO)
3" x 1/2"	80 x 15	88.9 x 21.3	24	G4105 (UL/FM)
3" x 1"	80 x 25	88.9 x 33.7	24	G4106 (UL/FM)
3" x 1-1/2"	80 x 40	88.9 x 48.3	24	G4107 (UL/FM)
3" x 2"	80 x 50	88.9 x 60.3	24	G4108 (UL)
4" x 1/2"	100 x 15	114.3 x 21.3	27	G4109 (UL/FM)
4" x 1"	100 x 25	114.3 x 33.7	27	G4110 (UL/FM)
4" x 1-1/2"	100 x 40	114.3 x 48.3	27	G4111 (UL/FM)
4" x 2"	100 x 50	114.3 x 60.3	27	G4112 (UL)
5" x 2"	125 x 50	139.7 x 60.3	27	G4113 (UL)
6" x 1/2"	150 x 15	165.1 x 21.3	27	G4114 (UL/FM)
6" x 1"	150 x 25	165.1 x 33.7	27	G4115 (UL/FM)

Grooved drain cap with concentric hole

Available size

Inch	Size		End to end	Ref. No.
	DN	mm	L (mm)	
6" x 2"	150 x 50	165.1 x 60.3	27	G4116 (UL)
6" x 1"	150 x 25	168.3 x 33.7	25	G4117 (UL/FM)
6" x 1-1/2"	150 x 40	168.3 x 48.3	27	G4118 (UL/FM)
6" x 2"	150 x 50	168.3 x 60.3	27	G4119 (UL/FM)
8" x 1"	200 x 25	219.1 x 33.7	30	G4120 (UL/FM)
10" x 1"	250 x 25	273.0 x 33.7	32	G4121 (UL/FM)