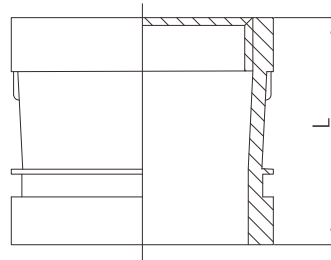


Grooved x female threaded adapter nipple



- Certificate: UL Listed / FM Approved
- Standard: ANSI / UL 213C
- Material: Ductile iron ASTM A536, 65-45-12
- Thread run: Female thread, NPT / BSPT
- Rated pressure: 300 ~ 500 psi
- Surface: Red painting / hot dip galvanized



Available size

Inch	Size		End to end	Ref. No.
	DN	mm	L (mm)	
2"	50	60.3	64	G3604
2-1/2"	65	73.0	70	G3605
3"	80	88.9	70	G3606
4"	100	114.3	83	G3607