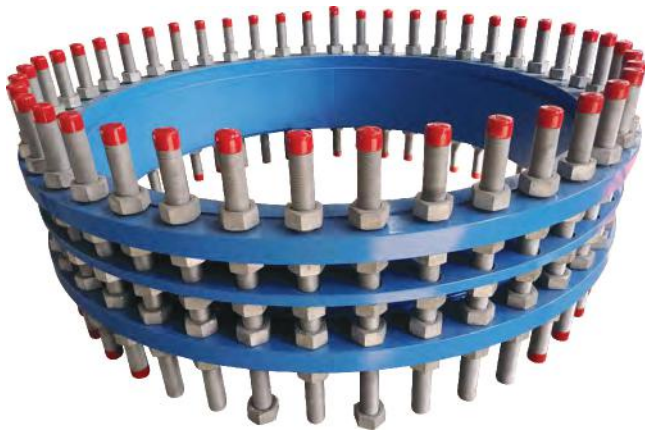


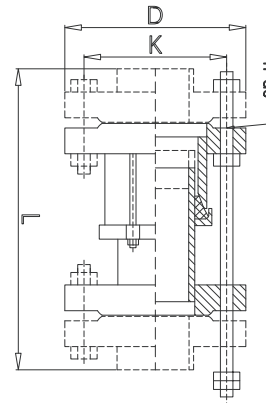
SD power transmission joint

SD power transmission joint is used to connect the pump, valve and other equipment in the pipeline. It is adjustable and allows a certain amount of displacement, withstand the axial pressure, so to protect pump and valve.



CE

- Certificate: CE
- Standard: EJMA
- Connection: Flanged drilling as ANSI B16.1 Class 125, EN 1092-2 PN16
- Temperature: -15°C to 80°C (-30°C to 115°C)
- W. pressure: 16 bar
- Surface: Blue painting



Main parts and material

Body	Q235 / 20# / WCB / QT450 / SS304 / SS316L	Gasket	NR / EPDM / NBR / NEOPRENE
Follower / Spool flange	Q235 / 20# / WCB / QT450 / SS304 / SS316L	Fastening screws	Q235 / SS304 / SS316L

Available size

Size		L (mm)	Flange connection size				Expansion amount Δ (mm)	Ref. No.
Inch	DN		D (mm)	K (mm)	d0 (mm)	n (nos)		
2-1/2"	65	330	185	145	18	8	20	U3101
3"	80	330	200	160	18	8	20	U3102
4"	100	330	220	180	18	8	20	U3103
5"	125	330	250	210	18	8	20	U3104
6"	150	340	285	240	18	8	20	U3105
8"	200	340	340	295	22	8	20	U3106
10"	250	340	395	350	22	12	20	U3107
12"	300	370	445	400	22	12	25	U3108
14"	350	370	505	460	22	16	25	U3109
16"	400	380	565	515	26	16	25	U3110

SD power transmission joint

Available size

Size		L (mm)	Flange connection size				Expansion amount Δ (mm)	Ref. No.
Inch	DN		D (mm)	K (mm)	d0 (mm)	n (nos)		
18"	450	380	615	565	26	20	25	U3111
20"	500	380	670	620	26	20	25	U3112
24"	600	420	780	725	30	20	25	U3113
28"	700	420	895	840	30	24	25	U3114
32"	800	560	1015	950	33	24	30	U3115
36"	900	560	1115	1050	33	28	30	U3116
40"	1000	560	1230	1160	36	28	30	U3117
48"	1200	600	1455	1380	39	32	30	U3118
56"	1400	630	1675	1590	42	36	30	U3119
64"	1600	670	1915	1820	48	40	30	U3120
72"	1800	690	2115	2020	48	44	30	U3121
80"	2000	690	2325	2230	48	48	30	U3122
88"	2200	730	2550	2440	56	52	30	U3123
96"	2400	730	2760	2650	56	56	30	U3124
104"	2600	820	2960	2850	56	60	40	U3125
112"	2800	820	3180	3070	56	64	40	U3126
120"	3000	840	3405	3290	62	68	40	U3127