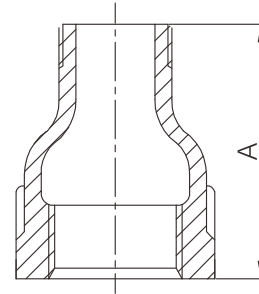


Malleable iron male and female reducing socket



- Certificate: ISO
- Standard: ASME B16.3
- Material: Malleable iron ASTM A197
- Thread: NPT
- W. pressure: Class 150, 300 psi (-29°C to 66°C)
Class 300, 1000 / 1500 / 2000 psi (-29°C to 66°C)
- Surface: Black iron / hot dip galvanized



Available size (Class 150)

Inch	Size		A mm	Ref. No.
	DN	mm		
3/8" x 1/4"	10 x 8	17.1 x 13.7	35	M7503 (ISO)
1/2" x 1/4"	15 x 8	21.3 x 13.7	43	M7505 (ISO)
1/2" x 3/8"	15 x 10	21.3 x 17.1	43	M7506 (ISO)
3/4" x 3/8"	20 x 10	26.7 x 17.1	48	M7509 (ISO)
3/4" x 1/2"	20 x 15	26.7 x 21.3	48	M7510 (ISO)
1" x 1/2"	25 x 15	33.4 x 21.3	55	M7513 (ISO)
1" x 3/4"	25 x 20	33.4 x 26.7	55	M7514 (ISO)
1-1/4" x 1/2"	32 x 15	42.2 x 21.3	60	M7516 (ISO)
1-1/4" x 3/4"	32 x 20	42.2 x 26.7	60	M7517 (ISO)
1-1/4" x 1"	32 x 25	42.2 x 33.4	60	M7518 (ISO)
1-1/2" x 3/4"	40 x 20	48.3 x 26.7	63	M7522 (ISO)
1-1/2" x 1"	40 x 25	48.3 x 33.4	63	M7523 (ISO)
1-1/2" x 1-1/4"	40 x 32	48.3 x 42.2	63	M7524 (ISO)
2" x 1"	50 x 25	60.3 x 33.4	70	M7529 (ISO)
2" x 1-1/4"	50 x 32	60.3 x 42.2	70	M7530 (ISO)
2" x 1-1/2"	50 x 40	60.3 x 48.3	70	M7531 (ISO)