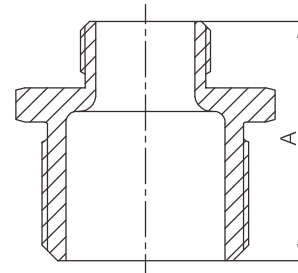


Malleable cast iron reducing hexagon nipple



- Certificate: UL Listed / FM Approved
- Standard: ISO 49 / EN 10242, symbol C
- Material: BS EN 1562, EN-GJMB-350-10
- Thread: BSPT
- W. pressure: 20 ~ 25 bar, ≤ PN25
- Surface: Black iron / hot dip galvanized



Available size

Inch	Size		A	Ref. No.
	DN	mm	mm	
1/2" x 1/4"	15 x 8	21.3 x 13.5	44	M3105 (UL/FM)
1/2" x 3/8"	15 x 10	21.3 x 17.2	44	M3106 (UL/FM)
3/4" x 1/4"	20 x 8	26.9 x 13.5	47	M3108 (UL/FM)
3/4" x 3/8"	20 x 10	26.9 x 17.2	47	M3109 (UL/FM)
3/4" x 1/2"	20 x 15	26.9 x 21.3	47	M3110 (UL/FM)
1" x 1/2"	25 x 15	33.7 x 21.3	53	M3113 (UL/FM)
1" x 3/4"	25 x 20	33.7 x 26.9	53	M3114 (UL/FM)
1-1/4" x 1/2"	32 x 15	42.4 x 21.3	57	M3116 (UL/FM)
1-1/4" x 3/4"	32 x 20	42.4 x 26.9	57	M3117 (UL/FM)
1-1/4" x 1"	32 x 25	42.4 x 33.7	57	M3118 (UL/FM)
1-1/2" x 1/2"	40 x 15	48.3 x 21.3	59	M3121 (UL/FM)
1-1/2" x 3/4"	40 x 20	48.3 x 26.9	59	M3122 (UL/FM)
1-1/2" x 1"	40 x 25	48.3 x 33.7	59	M3123 (UL/FM)
1-1/2" x 1-1/4"	40 x 32	48.3 x 42.4	59	M3124 (UL/FM)
2" x 1/2"	50 x 15	60.3 x 21.3	68	M3125 (UL/FM)

Malleable cast iron reducing hexagon nipple

Available size

Inch	Size		A	Ref. No.
	DN	mm	mm	
2" x 3/4"	50 x 20	60.3 x 26.9	68	M3127 (UL/FM)
2" x 1"	50 x 25	60.3 x 33.7	68	M3129 (UL/FM)
2" x 1-1/4"	50 x 32	60.3 x 42.4	68	M3130 (UL/FM)
2" x 1-1/2"	50 x 40	60.3 x 48.3	68	M3131 (UL/FM)
2-1/2" x 1"	65 x 25	76.1 x 33.7	75	M3134 (UL/FM)
2-1/2" x 1-1/4"	65 x 32	76.1 x 42.4	75	M3135 (UL/FM)
2-1/2" x 1-1/2"	65 x 40	76.1 x 48.3	75	M3136 (UL/FM)
2-1/2" x 2"	65 x 50	76.1 x 60.3	75	M3137 (UL/FM)
3" x 1-1/2"	80 x 40	88.9 x 48.3	83	M3143 (UL/FM)
3" x 2"	80 x 50	88.9 x 60.3	83	M3144 (UL/FM)
3" x 2-1/2"	80 x 65	88.9 x 76.1	83	M3145 (UL/FM)
4" x 2"	100 x 50	114.3 x 60.3	87	M3151 (UL/FM)
4" x 2-1/2"	100 x 65	114.3 x 76.1	87	M3152 (UL/FM)
4" x 3"	100 x 80	114.3 x 88.9	87	M3153 (UL/FM)