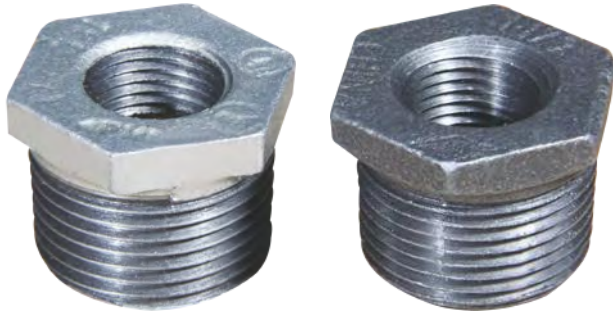
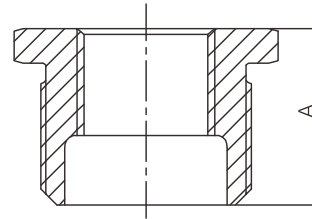


Malleable cast iron bushing



- Certificate: UL Listed / FM Approved / NSF 61
- Standard: ISO 49 / EN 10242, symbol C
- Material: BS EN 1562, EN-GJMB-350-10
- Thread: BSPT
- W. pressure: 20 ~ 25 bar, ≤ PN25
- Surface: Black iron / hot dip galvanized



Available size

| Inch | Size | | A | Ref. No. |
|---------------|---------|-------------|----|---------------|
| | DN | mm | mm | |
| 1/4" x 1/8" | 8 x 6 | 13.5 x 10.2 | 20 | M2801 (UL/FM) |
| 3/8" x 1/8" | 10 x 6 | 17.2 x 10.2 | 20 | M2802 (UL/FM) |
| 3/8" x 1/4" | 10 x 8 | 17.2 x 13.5 | 20 | M2803 (UL/FM) |
| 1/2" x 1/8" | 15 x 6 | 21.3 x 10.2 | 24 | M2804 (UL/FM) |
| 1/2" x 1/4" | 15 x 8 | 21.3 x 13.5 | 24 | M2805 (UL/FM) |
| 1/2" x 3/8" | 15 x 10 | 21.3 x 17.2 | 24 | M2806 (UL/FM) |
| 3/4" x 1/8" | 20 x 6 | 26.9 x 10.2 | 26 | M2807 (UL/FM) |
| 3/4" x 1/4" | 20 x 8 | 26.9 x 13.5 | 26 | M2808 (UL/FM) |
| 3/4" x 3/8" | 20 x 10 | 26.9 x 17.2 | 26 | M2809 (UL/FM) |
| 3/4" x 1/2" | 20 x 15 | 26.9 x 21.3 | 26 | M2810 (UL/FM) |
| 1" x 1/4" | 25 x 8 | 33.7 x 13.5 | 29 | M2811 (UL/FM) |
| 1" x 3/8" | 25 x 10 | 33.7 x 17.2 | 29 | M2812 (UL/FM) |
| 1" x 1/2" | 25 x 15 | 33.7 x 21.3 | 29 | M2813 (UL/FM) |
| 1" x 3/4" | 25 x 20 | 33.7 x 26.9 | 29 | M2814 (UL/FM) |
| 1-1/4" x 3/8" | 32 x 10 | 42.4 x 17.2 | 31 | M2815 (UL/FM) |

Malleable cast iron bushing

Available size

| Inch | Size | | A | Ref. No. |
|-----------------|----------|--------------|----|---------------|
| | DN | mm | mm | |
| 1-1/4" x 1/2" | 32 x 15 | 42.4 x 21.3 | 31 | M2816 (UL/FM) |
| 1-1/4" x 3/4" | 32 x 20 | 42.4 x 26.9 | 31 | M2817 (UL/FM) |
| 1-1/4" x 1" | 32 x 25 | 42.4 x 33.7 | 31 | M2818 (UL/FM) |
| 1-1/2" x 1/4" | 40 x 8 | 48.3 x 13.5 | 31 | M2819 (UL/FM) |
| 1-1/2" x 3/8" | 40 x 10 | 48.3 x 17.2 | 31 | M2820 (UL/FM) |
| 1-1/2" x 1/2" | 40 x 15 | 48.3 x 21.3 | 31 | M2821 (UL/FM) |
| 1-1/2" x 3/4" | 40 x 20 | 48.3 x 26.9 | 31 | M2822 (UL/FM) |
| 1-1/2" x 1" | 40 x 25 | 48.3 x 33.7 | 31 | M2823 (UL/FM) |
| 1-1/2" x 1-1/4" | 40 x 32 | 48.3 x 42.4 | 31 | M2824 (UL/FM) |
| 2" x 1/2" | 50 x 15 | 60.3 x 21.3 | 31 | M2825 (UL) |
| 2" x 1/2" | 50 x 15 | 60.3 x 21.3 | 31 | M2825 (FM) |
| 2" x 3/4" | 50 x 20 | 60.3 x 26.9 | 31 | M2827 (UL) |
| 2" x 3/4" | 50 x 20 | 60.3 x 26.9 | 31 | M2827 (FM) |
| 2" x 1" | 50 x 25 | 60.3 x 33.7 | 31 | M2829 (UL/FM) |
| 2" x 1-1/4" | 50 x 32 | 60.3 x 42.4 | 35 | M2830 (UL/FM) |
| 2" x 1-1/2" | 50 x 40 | 60.3 x 48.3 | 35 | M2831 (UL/FM) |
| 2-1/2" x 1/2" | 65 x 15 | 76.1 x 21.3 | 40 | M2832 (UL/FM) |
| 2-1/2" x 3/4" | 65 x 20 | 76.1 x 26.9 | 40 | M2833 (UL/FM) |
| 2-1/2" x 1" | 65 x 25 | 76.1 x 33.7 | 40 | M2834 (FM) |
| 2-1/2" x 1-1/4" | 65 x 32 | 76.1 x 42.4 | 40 | M2835 (FM) |
| 2-1/2" x 1-1/2" | 65 x 40 | 76.1 x 48.3 | 40 | M2836 (UL/FM) |
| 2-1/2" x 2" | 65 x 50 | 76.1 x 60.3 | 40 | M2837 (UL/FM) |
| 3" x 1/2" | 80 x 15 | 88.9 x 21.3 | 44 | M2838 (UL/FM) |
| 3" x 3/4" | 80 x 20 | 88.9 x 26.9 | 44 | M2839 (UL) |
| 3" x 3/4" | 80 x 20 | 88.9 x 26.9 | 44 | M2839 (FM) |
| 3" x 1" | 80 x 25 | 88.9 x 33.7 | 44 | M2841 (FM) |
| 3" x 1-1/4" | 80 x 32 | 88.9 x 42.4 | 44 | M2842 (FM) |
| 3" x 1-1/2" | 80 x 40 | 88.9 x 48.3 | 44 | M2843 (FM) |
| 3" x 2" | 80 x 50 | 88.9 x 60.3 | 44 | M2844 (UL/FM) |
| 3" x 2-1/2" | 80 x 65 | 88.9 x 76.1 | 44 | M2845 (UL/FM) |
| 4" x 1/2" | 100 x 15 | 114.3 x 21.3 | 51 | M2846 (FM) |
| 4" x 3/4" | 100 x 20 | 114.3 x 26.9 | 51 | M2847 (UL/FM) |
| 4" x 1" | 100 x 25 | 114.3 x 33.7 | 51 | M2848 (UL/FM) |

Malleable cast iron bushing

Available size

| Size | | | A | Ref. No. |
|-------------|----------|--------------|----|---------------|
| Inch | DN | mm | mm | |
| 4" x 1-1/4" | 100 x 32 | 114.3 x 42.4 | 51 | M2849 (UL/FM) |
| 4" x 1-1/2" | 100 x 40 | 114.3 x 48.3 | 51 | M2850 (UL/FM) |
| 4" x 2" | 100 x 50 | 114.3 x 60.3 | 51 | M2851 (FM) |
| 4" x 2-1/2" | 100 x 65 | 114.3 x 76.1 | 51 | M2852 (FM) |
| 4" x 3" | 100 x 80 | 114.3 x 88.9 | 51 | M2853 (UL/FM) |

Note: NSF 61 certificate is available for M2802 ~ M2853, except M2801, M2804, M2807, M2815, M2819, M2820.