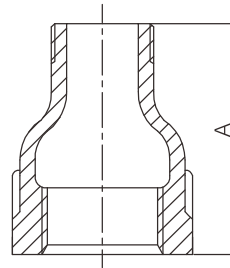


# Malleable cast iron male and female reducing socket



- Certificate: UL Listed / FM Approved / NSF 61
- Standard: ISO 49 / EN 10242, symbol C
- Material: BS EN 1562, EN-GJMB-350-10
- Thread: BSPT
- W. pressure: 20 ~ 25 bar, ≤ PN25
- Surface: Black iron / hot dip galvanized



## Available size

Size		A		Ref. No.
Inch	DN	mm	mm	
3/8" x 1/4"	10 x 8	17.2 x 13.5	35	M2503 (UL/FM)
1/2" x 1/4"	15 x 8	21.3 x 13.5	43	M2505 (UL/FM)
1/2" x 3/8"	15 x 10	21.3 x 17.2	43	M2506 (UL/FM)
3/4" x 3/8"	20 x 10	26.7 x 17.2	48	M2509 (UL/FM)
3/4" x 1/2"	20 x 15	26.7 x 21.3	48	M2510 (UL/FM)
1" x 1/2"	25 x 15	33.7 x 21.3	55	M2513 (UL/FM)
1" x 3/4"	25 x 20	33.7 x 26.9	55	M2514 (UL/FM)
1-1/4" x 1/2"	32 x 15	42.4 x 21.3	60	M2516 (UL/FM)
1-1/4" x 3/4"	32 x 20	42.4 x 26.9	60	M2517 (UL/FM)
1-1/4" x 1"	32 x 25	42.4 x 33.7	60	M2518 (UL/FM)
1-1/2" x 3/4"	40 x 20	48.3 x 26.9	63	M2522 (UL/FM)
1-1/2" x 1"	40 x 25	48.3 x 33.7	63	M2523 (UL/FM)
1-1/2" x 1-1/4"	40 x 32	48.3 x 42.4	63	M2524 (UL/FM)
2" x 1"	50 x 25	60.3 x 33.7	70	M2529 (UL/FM)
2" x 1-1/4"	50 x 32	60.3 x 42.4	70	M2530 (UL/FM)
2" x 1-1/2"	50 x 40	60.3 x 48.3	70	M2531 (UL/FM)

Note: NSF 61 certificate is available for M2506 ~ M2531, except M2503, M2505.