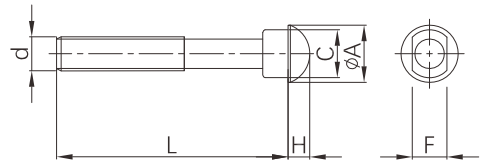


## ANSI oval neck track head bolt



- Standard: ASME B18.10
- Material: Carbon steel as ASTM A183
- Thread: ANSI B 1.1, Class 2A
- Surface: Zinc electroplated as ASTM B633 Fe/Zn 5, or chromed as ASTM B650 Class 1



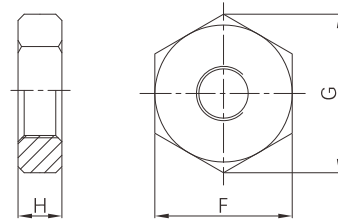
### Available size

Bolt & thread per inch (d)	Size (mm)					Recommend bolt torque (Lb-Ft)	Ref. No.
	A	C	F	H	L		
3/8" - 16UNC	19.00	13.90	9.50	6.00	50 ~ 90	30 ~ 45	G9401
1/2" - 13UNC	22.50	16.00	12.70	8.00	70 ~ 110	80 ~ 100	G9402
5/8" - 11UNC	27.40	19.80	15.90	10.00	80 ~ 120	100 ~ 130	G9403
3/4" - 10UNC	32.50	26.20	19.05	12.00	90 ~ 130	130 ~ 180	G9404
7/8" - 9UNC	37.70	28.80	22.20	14.00	100 ~ 150	180 ~ 240	G9405

## ANSI heavy hexagon nut



- Standard: ASME B18.2.2
- Material: Carbon steel as ASTM A563 Gr. B
- Thread: ANSI B 1.1, Class 2B
- Surface: Zinc electroplated as ASTM B633 Fe/Zn 5, or chromed as ASTM B650 Class 1



### Available size

Nominal nut and thread per inch (D)	F (mm)		G (mm)		H (mm)		Ref. No.
	Min	Max	Min	Max	Min	Max	
3/8" - 16UNC	16.99	17.74	19.38	20.17	8.66	9.57	G9501
1/2" - 13UNC	21.59	22.22	24.61	25.65	11.78	12.80	G9502
5/8" - 11UNC	26.19	26.97	29.85	31.16	14.90	16.02	G9503
3/4" - 10UNC	30.78	31.75	35.10	36.65	18.03	19.25	G9504
7/8" - 9UNC	35.41	36.53	40.36	42.16	21.16	22.48	G9505