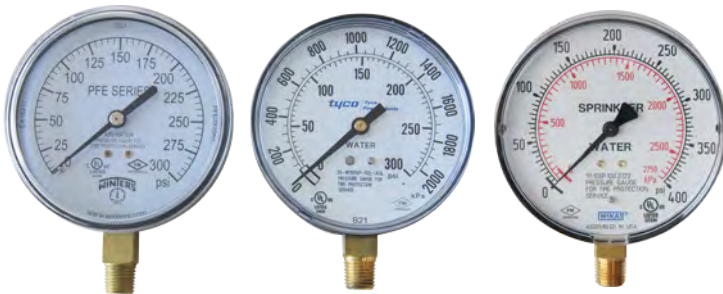
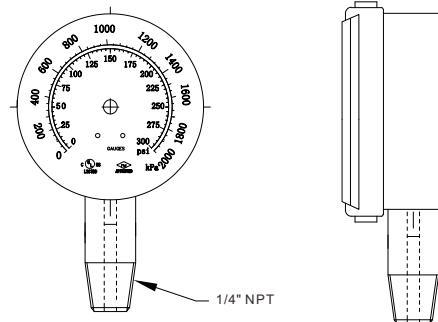


# Fire sprinkler pressure gauge

Fire sprinkler pressure gauge is bourdon tube pressure gauge designed for fire sprinkler system and firefighting equipment measuring both water and air pressure. It has single or dual scales pressure ratings.



- Certificate: UL Listed / FM Approved
- Standard: UL 393 / ASME B40.100 / EN 837-1
- Connection: 1/4" NPT, lower mount (LM) / 1/4" BSPT/BSPP bottom or back connection
- Temperature: -40°C to 65°C
- W. pressure: Steady, 3/4 of full scale value  
Fluctuating, 2/3 of full scale value  
Short time, full scale valve
- Surface: Corrosion resistant finish



## Available size

Ref. No.	V9501 (UL/FM)	V9502 (UL/FM)	V9503 (UL/FM)	V9504 (UL/FM)	V9505 (UL/FM)	V9506 (UL)
Scale value	0 ~ 300 psi	0 ~ 300 psi	0 ~ 400 psi	0 ~ 600 psi	0 ~ 80 psi, retard to 250 psi	0 ~ 300 psi
Scale type	Dual, psi/bar	Dual, psi/kPa	Dual, psi/kPa	Dual, psi/kPa	Single, psi	Dual, psi/kPa
Dial size	3.5" (90mm)	3.5" (90mm)	4" (100mm)	4" (100mm)	3.5" / 4"	4" (100mm)
Material	1. Dial, white aluminum with stop pin, black and red lettering; 2. Case, black plastic(carbon steel with black painting or 304SS for V8706); 3. Window, clear polycarbonate; 4. Bourdon tube, copper alloy; 5. Movement, copper alloy; 6. Pointer, aluminum, black; 7. Enclosure rating, IP52.					
Accuracy	3% - 2% - 3% as Grade B of ASME B40.100 / B40.1: a. ±3% accuracy tolerance, lower 1/4 of scale b. ±2% accuracy tolerance, middle 1/2 of scale c. ±3% accuracy tolerance, lower 1/4 of scale					

### Note:

1. For dual scales, the combination with psi is available: bar, kPa, MPa, kg/cm<sup>2</sup>.
2. Additional error when temperature changes from reference temperature of 68°F (20°C) +0.4% of span for every 18°F (10°K) rising or falling.