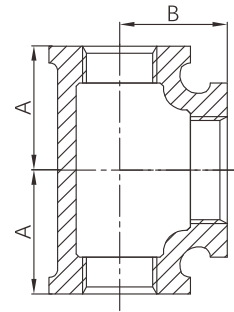


Malleable cast iron unequal tee (Increasing tee)



- Certificate: UL Listed / FM Approved / NSF 61
- Standard: ISO 49 / EN 10242, symbol C
- Material: BS EN 1562, EN-GJMB-350-10
- Thread: BSPT
- W. pressure: 20 ~ 25 bar, ≤ PN25
- Surface: Black iron / hot dip galvanized



Available size

Size			A	B	Ref. No.
Inch	DN	mm	mm	mm	
1/2" x 1/2" x 3/4"	15 x 15 x 20	21.3 x 21.3 x 26.9	31	30	M1110 (UL/FM)
1/2" x 1/2" x 1"	15 x 15 x 25	21.3 x 21.3 x 33.7	34	32	M1113 (UL/FM)
3/4" x 3/4" x 1"	20 x 20 x 25	26.9 x 26.9 x 33.7	36	35	M1114 (UL/FM)
3/4" x 3/4" x 1-1/4"	20 x 20 x 32	26.9 x 26.9 x 42.4	41	36	M1117 (UL/FM)
1" x 1" x 1-1/4"	25 x 25 x 32	33.7 x 33.7 x 42.4	42	40	M1118 (UL/FM)
1" x 1" x 1-1/2"	25 x 25 x 40	33.7 x 33.7 x 48.3	46	42	M1123 (UL/FM)
1" x 1" x 2"	25 x 25 x 50	33.7 x 33.7 x 60.3	52	44	M1129 (UL/FM)
1" x 1" x 2-1/2"	25 x 25 x 65	33.7 x 33.7 x 76.1	60	47	M1134 (UL/FM)
1-1/4" x 1-1/4" x 1-1/2"	32 x 32 x 40	42.4 x 42.4 x 48.3	48	46	M1124 (UL/FM)
1-1/4" x 1-1/4" x 2"	32 x 32 x 50	42.4 x 42.4 x 60.3	54	48	M1130 (UL/FM)
1-1/2" x 1-1/2" x 2"	40 x 40 x 50	48.3 x 48.3 x 60.3	55	52	M1131 (UL/FM)
1-1/2" x 1-1/2" x 2-1/2"	40 x 40 x 65	48.3 x 48.3 x 76.1	63	55	M1136 (UL/FM)
2" x 2" x 2-1/2"	50 x 50 x 65	60.3 x 60.3 x 76.1	66	61	M1137 (UL/FM)
2" x 2" x 3"	50 x 50 x 80	60.3 x 60.3 x 88.9	73	64	M1144 (ISO)
2-1/2" x 2-1/2" x 3"	65 x 65 x 80	76.1 x 76.1 x 88.9	76	72	M1145 (UL/FM)
2-1/2" x 2-1/2" x 4"	65 x 65 x 100	76.1 x 76.1 x 114.3	92	84	M1152 (UL/FM)

Note: NSF 61 certificate is available for M1110 ~ M1152.