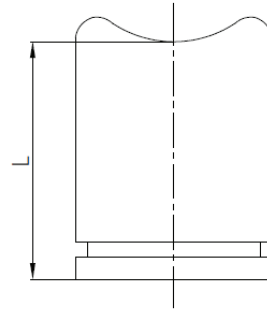


Grooved welded outlet (Wrought steel)



- Certificate: UL Listed / FM Approved
- Standard: UL Subject 213B, NFPA 13
- Material: ASTM A234, equal to carbon steel pipe
ASTM A53 / A795
- Groove: AWWA C606 and ISO 6182-12
- Rated pressure: 300 psi
- Surface: Oiled / red painting / hot dip galvanized



Available size

Size			Thickness (mm)		Run pipe size	L (mm)	Ref. No.
NPS	DN	OD (mm)	Sch10	Sch40			
1"	25	33.4	2.77	3.38	1-1/4" ~ 4"	75	N8001 (UL/FM)
1-1/4"	32	42.2	2.77	3.56	1-1/2" ~ 8"	75	N8002 (UL/FM)
1-1/2"	40	48.3	2.77	3.68	2" ~ 8"	75	N8003 (UL/FM)
2"	50	60.3	2.77	3.91	2-1/2" ~ 8"	75	N8004 (UL/FM)
2-1/2"	65	73.0 / 76.1	3.05	5.16	3" ~ 8"	75	N8005 (UL/FM)
3"	80	88.9	3.05	5.49	4" ~ 8"	75	N8006 (UL/FM)
4"	100	114.3	3.05	6.02	5" ~ 8"	100	N8007 (UL/FM)
5"	125	141.3	3.40	6.55	6" ~ 8"	100	N8008 (ISO)
6"	150	168.3	3.40	7.11	8"	100	N8009 (ISO)