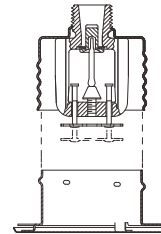


## K8.0 ECLH concealed pendent sprinkler

K8.0 ECLH (Extended coverage light hazard) concealed pendent sprinkler is designed for use in light hazard occupancies, and it provides max coverage area of 400 ft<sup>2</sup> (37.2 m<sup>2</sup>) as NFPA 13.



- Certificate: UL Listed
- Standard: UL 199, NFPA 13
- Feature: K8.0 (K115), ECLH, min spacing 8 ft
- W. pressure: 175 psi
- T. pressure: 500 psi, factory hydrostatic test
- O. pressure: Min 7 psi
- Surface: Rough brass for sprinkler, chromed plated / white painted / others for cover plate



### Main parts and material

<b>Deflector / frame</b>	Bronze / brass	<b>Heat responsive element</b>	Glass bulb, 3 mm diameter
<b>Sealing assembly</b>	Nickel alloy spring + Teflon tape	<b>Cover / cover plate</b>	Steel / brass, with fusible solder

### Available size

Type	Nominal K-Factor	Response type	Temperature rating	Cover plate	Connection	Working pressure (psi)	Ref. No.
ECLH concealed pendent	K8.0 (K115)	Quick (QR)	135°F (57°C)	135°F (57°C)	3/4", NPT or BSPT	175	S2701 (UL)
ECLH concealed pendent	K8.0 (K115)	SR / QR	155°F (68°C)	135°F (57°C)	3/4", NPT or BSPT	175	S2702 (UL)
ECLH concealed pendent	K8.0 (K115)	Quick (QR)	175°F (79°C)	165°F (74°C)	3/4", NPT or BSPT	175	S2703 (UL)

**Note:**

1. As UL rule, it is SR or QR sprinkler at max coverage area (ft x ft) 16 x 16, 18 x 18, and 20 x 20, with different temperature rating.
2. The cover assembly provides adjustment up to 1/2" (12.7 mm).