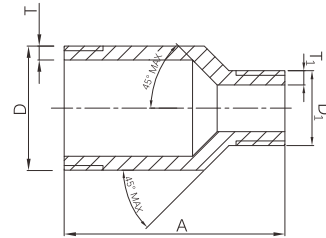


Concentric swage nipple



- Certificate: ISO
- Standard: MSS SP-95, SH/T 3419
- Material: Carbon steel ASTM A234, WPB
SS ASTM A403, WP304 / WP316L
- Type: Concentric
- W. pressure: Equal to same seamless pipe
- Surface: Oiled / hot dip galvanized
Pickling white, etc.



Available size

Size (D x D ₁)			Thickness T x T ₁ (mm)		End to end	Connection	Ref. No.
NPS	DN	OD (mm)	Sch40	Sch80	A (mm)		
1/2" x 3/8"	15 x 10	21.3 x 17.1	2.77 x 2.31	3.73 x 3.20	70	TBE, PBE, BBE, etc.	N6901
3/4" x 1/2"	20 x 15	26.7 x 21.3	2.87 x 2.77	3.91 x 3.73	76	TBE, PBE, BBE, etc.	N6902
3/4" x 3/8"	20 x 10	26.7 x 17.1	2.87 x 2.31	3.91 x 3.20	76	TBE, PBE, BBE, etc.	N6903
1" x 3/4"	25 x 20	33.4 x 26.7	3.38 x 2.87	4.55 x 3.91	89	TBE, PBE, BBE, etc.	N6904
1" x 1/2"	25 x 15	33.4 x 21.3	3.38 x 2.77	4.55 x 3.73	89	TBE, PBE, BBE, etc.	N6905
1-1/4" x 1"	32 x 25	42.2 x 33.4	3.56 x 3.38	4.85 x 4.55	102	TBE, PBE, BBE, etc.	N6906
1-1/4" x 3/4"	32 x 20	42.2 x 26.7	3.56 x 2.87	4.85 x 3.91	102	TBE, PBE, BBE, etc.	N6907
1-1/4" x 1/2"	32 x 15	42.2 x 21.3	3.56 x 2.77	4.85 x 3.73	102	TBE, PBE, BBE, etc.	N6908
1-1/2" x 1-1/4"	40 x 32	48.3 x 42.2	3.68 x 3.56	5.08 x 4.85	114	TBE, PBE, BBE, etc.	N6909
1-1/2" x 1"	40 x 25	48.3 x 33.4	3.68 x 3.38	5.08 x 4.55	114	TBE, PBE, BBE, etc.	N6910
1-1/2" x 3/4"	40 x 20	48.3 x 26.7	3.68 x 2.87	5.08 x 3.91	114	TBE, PBE, BBE, etc.	N6911
1-1/2" x 1/2"	40 x 15	48.3 x 21.3	3.68 x 2.77	5.08 x 3.73	114	TBE, PBE, BBE, etc.	N6912
2" x 1-1/2"	50 x 40	60.3 x 48.3	3.91 x 3.68	5.54 x 5.08	165	TBE, PBE, BBE, etc.	N6913
2" x 1-1/4"	50 x 32	60.3 x 42.2	3.91 x 3.56	5.54 x 4.85	165	TBE, PBE, BBE, etc.	N6914
2" x 1"	50 x 25	60.3 x 33.4	3.91 x 3.38	5.54 x 4.55	165	TBE, PBE, BBE, etc.	N6915

Concentric swage nipple

Available size

Size (D x D ₁)			Thickness T x T ₁ (mm)		End to end	Connection	Ref. No.
NPS	DN	OD (mm)	Sch40	Sch80	A (mm)		
2" x 3/4"	50 x 20	60.3 x 26.7	3.91 x 2.87	5.54 x 3.91	165	.TBE, PBE, BBE, etc.	N6916
2" x 1/2"	50 x 15	60.3 x 21.3	3.91 x 2.77	5.54 x 3.73	165	TBE, PBE, BBE, etc.	N6917
2-1/2" x 2"	65 x 50	73.0 x 60.3	5.16 x 3.91	7.01 x 5.54	178	TBE, PBE, BBE, etc.	N6918
2-1/2" x 1-1/2"	65 x 40	73.0 x 48.3	5.16 x 3.68	7.01 x 5.08	178	TBE, PBE, BBE, etc.	N6919
2-1/2" x 1-1/4"	65 x 32	73.0 x 42.2	5.16 x 3.56	7.01 x 4.85	178	TBE, PBE, BBE, etc.	N6920
2-1/2" x 1"	65 x 25	73.0 x 33.4	5.16 x 3.38	7.01 x 4.55	178	TBE, PBE, BBE, etc.	N6921
2-1/2" x 3/4"	65 x 20	73.0 x 26.7	5.16 x 2.87	7.01 x 3.91	178	TBE, PBE, BBE, etc.	N6922
2-1/2" x 1/2"	65 x 15	73.0 x 21.3	5.16 x 2.77	7.01 x 3.73	178	TBE, PBE, BBE, etc.	N6923
3" x 2-1/2"	80 x 65	88.9 x 73.0	5.49 x 5.16	7.62 x 7.01	203	TBE, PBE, BBE, etc.	N6924
3" x 2"	80 x 50	88.9 x 60.3	5.49 x 3.91	7.62 x 5.54	203	TBE, PBE, BBE, etc.	N6925
3" x 1-1/2"	80 x 40	88.9 x 48.3	5.49 x 3.68	7.62 x 5.08	203	TBE, PBE, BBE, etc.	N6926
3" x 1-1/4"	80 x 32	88.9 x 42.2	5.49 x 3.56	7.62 x 4.85	203	TBE, PBE, BBE, etc.	N6927
3" x 1"	80 x 25	88.9 x 33.4	5.49 x 3.38	7.62 x 4.55	203	TBE, PBE, BBE, etc.	N6928
3" x 3/4"	80 x 20	88.9 x 26.7	5.49 x 2.87	7.62 x 3.91	203	TBE, PBE, BBE, etc.	N6929
3" x 1/2"	80 x 15	88.9 x 21.3	5.49 x 2.77	7.62 x 3.73	203	TBE, PBE, BBE, etc.	N6930
4" x 3"	100 x 80	114.3 x 88.9	6.02 x 5.49	8.56 x 7.62	229	TBE, PBE, BBE, etc.	N6931
4" x 2-1/2"	100 x 65	114.3 x 73.0	6.02 x 5.16	8.56 x 7.01	229	TBE, PBE, BBE, etc.	N6932
4" x 2"	100 x 50	114.3 x 60.3	6.02 x 3.91	8.56 x 5.54	229	TBE, PBE, BBE, etc.	N6933
4" x 1-1/2"	100 x 40	114.3 x 48.3	6.02 x 3.68	8.56 x 5.08	229	TBE, PBE, BBE, etc.	N6934
4" x 1-1/4"	100 x 32	114.3 x 42.2	6.02 x 3.56	8.56 x 4.85	229	TBE, PBE, BBE, etc.	N6935
4" x 1"	100 x 25	114.3 x 33.4	6.02 x 3.38	8.56 x 4.55	229	TBE, PBE, BBE, etc.	N6936
4" x 3/4"	100 x 20	114.3 x 26.7	6.02 x 2.87	8.56 x 3.91	229	TBE, PBE, BBE, etc.	N6937
4" x 1/2"	100 x 15	114.3 x 21.3	6.02 x 2.77	8.56 x 3.73	229	TBE, PBE, BBE, etc.	N6938
5" x 4"	125 x 100	141.3 x 114.3	6.55 x 6.02	9.53 x 8.56	279	TBE, PBE, BBE, etc.	N6939
4" x 3"	100 x 80	141.3 x 88.9	6.55 x 5.49	9.53 x 7.62	279	TBE, PBE, BBE, etc.	N6940
4" x 2-1/2"	100 x 65	141.3 x 73.0	6.55 x 5.16	9.53 x 7.01	279	TBE, PBE, BBE, etc.	N6941
4" x 2"	100 x 50	141.3 x 60.3	6.55 x 3.91	9.53 x 5.54	279	TBE, PBE, BBE, etc.	N6942
4" x 1-1/2"	100 x 40	141.3 x 48.3	6.55 x 3.68	9.53 x 5.08	279	TBE, PBE, BBE, etc.	N6943
4" x 1-1/4"	100 x 32	141.3 x 42.2	6.55 x 3.56	9.53 x 4.85	279	TBE, PBE, BBE, etc.	N6944
4" x 1"	100 x 25	141.3 x 33.4	6.55 x 3.38	9.53 x 4.55	279	TBE, PBE, BBE, etc.	N6945
4" x 3/4"	100 x 20	141.3 x 26.7	6.55 x 2.87	9.53 x 3.91	279	TBE, PBE, BBE, etc.	N6946
4" x 1/2"	100 x 15	141.3 x 21.3	6.55 x 2.77	9.53 x 3.73	279	TBE, PBE, BBE, etc.	N6947
6" x 5"	125 x 100	168.3 x 141.3	7.11 x 6.55	10.97 x 9.53	305	TBE, PBE, BBE, etc.	N6948

Concentric swage nipple

Available size

Size (D x D ₁)			Thickness T x T ₁ (mm)		End to end	Connection	Ref. No.
NPS	DN	OD (mm)	Sch40	Sch80	A (mm)		
6" x 4"	125 x 100	168.3 x 114.3	7.11 x 6.02	10.97 x 8.56	305	TBE, PBE, BBE, etc.	N6949
4" x 3"	100 x 80	168.3 x 88.9	7.11 x 5.49	10.97 x 7.62	305	TBE, PBE, BBE, etc.	N6950
4" x 2-1/2"	100 x 65	168.3 x 73.0	7.11 x 5.16	10.97 x 7.01	305	TBE, PBE, BBE, etc.	N6951
4" x 2"	100 x 50	168.3 x 60.3	7.11 x 3.91	10.97 x 5.54	305	TBE, PBE, BBE, etc.	N6952
4" x 1-1/2"	100 x 40	168.3 x 48.3	7.11 x 3.68	10.97 x 5.08	305	TBE, PBE, BBE, etc.	N6953
4" x 1-1/4"	100 x 32	168.3 x 42.2	7.11 x 3.56	10.97 x 4.85	305	TBE, PBE, BBE, etc.	N6954
4" x 1"	100 x 25	168.3 x 33.4	7.11 x 3.38	10.97 x 4.55	305	TBE, PBE, BBE, etc.	N6955
4" x 3/4"	100 x 20	168.3 x 26.7	7.11 x 2.87	10.97 x 3.91	305	TBE, PBE, BBE, etc.	N6956
4" x 1/2"	100 x 15	168.3 x 21.3	7.11 x 2.77	10.97 x 3.73	305	TBE, PBE, BBE, etc.	N6957

Note:

- For end connection, it is available with TBE (Thread Both Ends), PBE (Plain Both Ends, PxP), BBE (Bevel Both Ends), TSE (Thread Small End), PSE (Plain Small End), BSE (Bevel Small End), TLE (Thread Large End), PLE (Plain Large End), BLE (Bevel Large End), grooved, etc.
- Other thickness and length available as customer request.