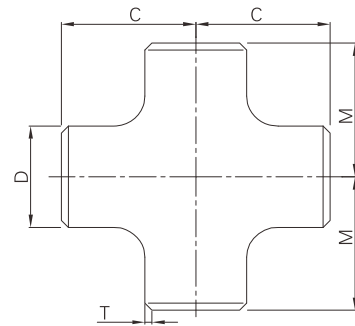


## Butt weld straight cross (Equal cross)



- Certificate: ISO
- Standard: ASME B16.9
- Material: Carbon steel ASTM A234, WPB  
SS ASTM A403, WP304 / WP316L
- W. pressure: Equal to same seamless pipe
- Surface: Black painting / hot dip galvanized  
Pickling white, etc.



### Available size

Size			Thickness (mm)			C (mm)	M (mm)	Ref. No.
NPS	DN	OD (mm)	Sch10	Sch40	Sch80			
1/2"	15	21.3	2.11	2.77	3.73	25	25	N0801
3/4"	20	26.7	2.11	2.87	3.91	29	29	N0802
1"	25	33.4	2.77	3.38	4.55	38	38	N0803
1-1/4"	32	42.2	2.77	3.56	4.85	48	48	N0804
1-1/2"	40	48.3	2.77	3.68	5.08	57	57	N0805
2"	50	60.3	2.77	3.91	5.54	64	64	N0806
2-1/2"	65	73.0	3.05	5.16	7.01	76	76	N0807
3"	80	88.9	3.05	5.49	7.62	86	86	N0808
4"	100	114.3	3.05	6.02	8.56	105	105	N0809
5"	125	141.3	3.40	6.55	9.53	124	124	N0810
6"	150	168.3	3.40	7.11	10.97	143	143	N0811
8"	200	219.1	3.76	8.18	12.70	178	178	N0812
10"	250	273.0	4.19	9.27	15.09	216	216	N0813
12"	300	323.8	4.57	10.31	17.48	254	254	N0814
14"	350	355.6	6.35	11.13	19.05	279	279	N0815
16"	400	406.4	6.35	12.70	21.44	305	305	N0816
18"	450	457	6.35	14.27	23.83	343	343	N0817
20"	500	508	6.35	15.09	26.19	381	381	N0818
24"	600	610	6.35	17.48	30.96	432	432	N0819

Note: The thickness is available with Sch5, Sch10, Sch30, Sch40, Sch80, Sch120, Sch160, STD, XS, XXS, 5S, 10S, 40S, 80S, etc.