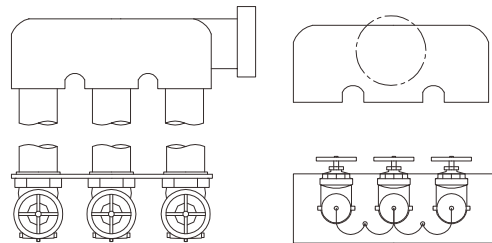


## Flush fire pump test connection (With valves)

Fire pump test connection is used to conduct flow test on fire pump, and each outlet is individually controlled by a gate valve which is permanently installed. For flush type, the body is concealed behind the wall.



- Certificate: UL listed
- Standard: NFPA 14 / 20
- Feature: Flush flow control outlet
- W. pressure: 300 psi
- Surface: Polished / chrome plated



### Main parts and material

<b>Body</b>	Cast brass, pipe thread for valve	<b>Gate valve</b>	Brass, with 2-1/2" (or 3") NPT inlet x 2-1/2" NH outlet
<b>Cap</b>	Brass, pin lug, with chain	<b>Wall plate</b>	Brass, special lettering for identification

### Available size

Size	Pump capacity (GPM)	Way of outlet	Body pattern	Inlet	Outlet	Working pressure (psi)	Ref. No.
6" x 2-1/2"	750	3-way	End	6" NPT, F	(3) 2-1/2" NH, M	300	F1001 (UL)
6" x 2-1/2"	1000	4-way	End	6" NPT, F	(4) 2-1/2" NH, M	300	F1002 (UL)
8" x 2-1/2"	1500	6-way	End	8" NPT, F	(6) 2-1/2" NH, M	300	F1003 (ISO)

**Note:** For other configuration such as back body, angle body, or square body, they are also available.