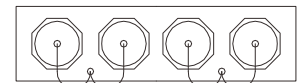
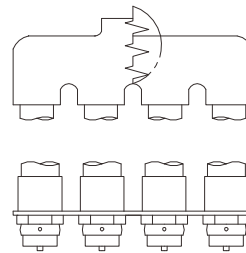


Flush fire department inlet connection (Clapper snoot)

Fire department inlet connection (Siamese connection) is used as an auxiliary connection to supplement water from its inlet. For flush FDC, the body is concealed behind the wall for aesthetic appearance and unobstructed passage.



- Certificate: UL listed
- Standard: ANSI / UL 405
- Feature: Flush clapper snoot inlet
- W. pressure: 300 / 175 psi
- Surface: Polished / chrome plated



Main parts and material

Body	Cast brass, without clapper	Clapper snoot	Cast brass, pin lug swivel inlet
Plug	Brass, pin lug, with chain	Wall plate	Brass, special lettering for identification

Available size

Size	Way of inlet	Clapper	Body pattern	Inlet	Outlet	Working pressure (psi)	Ref. No.
3" x 6"	3-way	Snoot	End	(3) 3" NPT, F	6" NPT, F	300	F0501 (UL)
3" x 6"	4-way	Snoot	End	(4) 3" NPT, F	6" NPT, F	300	F0502 (UL)
3" x 6"	4-way	Snoot	Straight	(4) 3" NPT, F	6" NPT, F	175	F0503 (UL)
3" x 6"	4-way	Snoot	Angle	(4) 3" NPT, F	6" NPT, F	175	F0504 (UL)
3" x 6"	6-way	Snoot	End	(6) 3" NPT, F	6" NPT, F	175	F0505 (ISO)
3" x 8"	6-way	Snoot	Angle	(6) 3" NPT, F	8" NPT, F	175	F0506 (ISO)
3" x 8"	6-way	Snoot	End	(6) 3" NPT, F	8" NPT, F	175	F0507 (ISO)

Note: The FDC assembly includes 4 parts: FDC body, check snoot, plug with chain, and wall plate. And above 3" NPT female is inlet of FDC body.