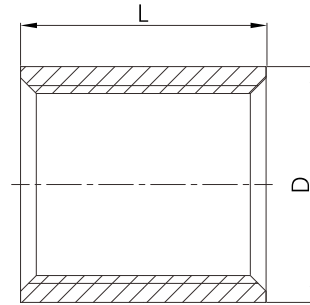


Steel RMC coupling

Steel RMC (rigid metal conduit) coupling is made from the same material of straight RMC conduit, and it connects the same size of the conduit together. Both the outside and inside surfaces are galvanized for corrosion resistance.



- Certificate: UL Listed
- Standard: UL 6 / ANSI C80.1
- Material: Carbon steel strip
- Surface: Hot dip galvanized



Available size

Trade size	Metric designator	OD	Length	Ref. No.
		D (mm)	L (mm)	
1/2"	16	25.7	41.3	C1801
3/4"	21	31.8	41.7	C1802
1"	27	38.7	50.0	C1803
1-1/4"	35	47.5	51.6	C1804
1-1/2"	41	54.7	52.4	C1805
2"	53	67.3	54.0	C1806
2-1/2"	63	82.6	81.0	C1807
3"	78	98.3	84.1	C1808
4"	103	123.8	89.3	C1809
5"	129	152.4	100.0	C1810
6"	155	182.9	108.0	C1811

Note:

1. OD tolerance: OD 1/2" ~ 1", - 0.40mm (0.016"); OD 1-1/4" ~ 6", -1%.
2. All couplings shall have straight-tapped threads.