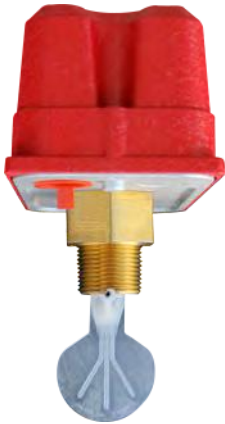


Vane type waterflow detector (Vane type waterflow switch)

Vane type waterflow detector installed in wet sprinkler system provides an electrical alarm. When water movement deflects the vane inserted in waterway, and the motion is transmitted to an alarm-actuating switch after a predetermined time delay.

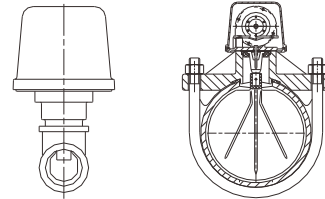


Threaded type



U-bolt type

- Certificate: UL Listed / FM Approved
- Standard: UL 346, comply to NFPA 13, 13D, 13R, 72
- Trigger threshold: Flow rate 4 ~ 10 GPM
- Max surge: 18 FPS (Feet per second)
- Retard time: 0-90 second delay, field replaceable
- Temperature: 0°C to 49°C
- Pressure rating: 250 / 450 / 300 psi
- Surface: FBE coating as AWWA C550



Main parts and feature

Contact ratings	Two SPDT, 10A @ 125/250VAC, 2.5A @ 24VDC, etc.	Conduit entrance	2 openings for 1/2" conduit, accommodates up to 12 AWG wire
Enclosure	NEMA 4 (IP56), indoor and outdoor use	Cover	Tamper resistant cover screws

Available size

Compatible steel pipe			Drilled hole in pipe (mm)	Connection	Working pressure (psi)	Ref. No.
Inch	DN	Thickness				
Pipe 1" ~ 2"	25 ~ 50	Sch10 / Sch40	/	Threaded, NPT	250 / 450	V8501 (UL/FM)*
Pipe 2"	50	Sch10 / Sch40	33.0 ± 2.0	U-bolt	450	V8502 (UL/FM)
Pipe 2-1/2"	65	Sch10 / Sch40	33.0 ± 2.0	U-bolt	450	V8503 (UL/FM)
Pipe 3"	80	Sch10 / Sch40	50.8 ± 2.0	U-bolt	450	V8504 (UL/FM)
Pipe 4"	100	Sch10 / Sch40	50.8 ± 2.0	U-bolt	450	V8505 (UL/FM)
Pipe 5"	125	Sch10 / Sch40	50.8 ± 2.0	U-bolt	450	V8506 (UL/FM)
Pipe 6"	150	Sch10 / Sch40	50.8 ± 2.0	U-bolt	450	V8507 (UL/FM)
Pipe 8"	200	Sch10 / Sch40	50.8 ± 2.0	U-bolt	450	V8508 (UL/FM)
Pipe 10"	250	Sch10 / Sch40	50.8 ± 2.0	U-bolt	300	V8509 (UL)

Note: * For threaded type, 12 different paddles are furnished. The threaded waterflow detector fits pipe size 1", 1-1/4", 1-1/2" and 2" through its 1" NPT end threading into a tee (Tee size includes 1" x 1" x 1", 1-1/4" x 1-1/4" x 1", 1-1/2" x 1-1/2" x 1", 2" x 2" x 1"). When installation, the installer shall select the proper paddle for the pipe size and tee type, so to ensure the proper installation depth and clearance of the waterflow detector to the tee.