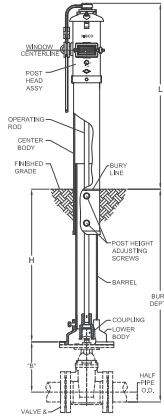


## Vertical indicator post (Underground type indicator post)



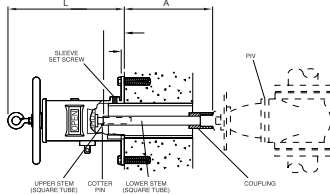
- Certificate: UL Listed / FM Approved
- Standard: UL 789, FM 1110
- Material: Cast iron barrel and L wrench, carbon steel stem, plexiglass window, etc.
- Base flange: Dia 12", PCD 10-1/2", bolt hole 4 x 3/4"
- Stem coupling: 2", to fit NRS gate valve with wrench nut
- Surface: Red FBE coating as AWWA C550 + black bituminous coating

### Available size

Compatible valve size		Top to bury line L (mm)	Adjustable height range H (mm)	Operating stem	Ref. No.
Inch	DN				
4" ~ 24"	100 ~ 600	1005	558 ~ 1408	Fixed	V7501 (UL/FM)
4" ~ 12"	100 ~ 300	930	459 ~ 1003	Telescopic	V7502 (UL/FM)
4" ~ 12"	100 ~ 300	930	915 ~ 1537	Telescopic	V7503 (UL/FM)
14" ~ 24"	350 ~ 600	1003	548 ~ 1425	Fixed	V7504 (UL)

**Note:** It has a pre-cast boss on the barrel that could be tapped with 1/2" NPT to install additional supervisory switch.

## Wall indicator post



- Certificate: UL Listed / FM Approved
- Standard: UL 789, FM 1110
- Material: Cast iron barrel and handwheel, carbon steel stem, plexiglass window, etc.
- Integral flange: Dia 12", PCD 10-1/2", bolt hole 4 x 3/4"
- Stem coupling: 2", to fit NRS gate valve with wrench nut
- Surface: Red FBE coating as AWWA C550

### Available size

Compatible valve size		L (mm)	Operating stem A (mm)	Ref. No.
Inch	DN			
4" ~ 12"	100 ~ 300	508	max 720	V7601
4" ~ 12"	100 ~ 300	470	max 738	V7602

**Note:** It has a pre-cast boss on the barrel that could be tapped with 1/2" NPT to install additional supervisory switch.