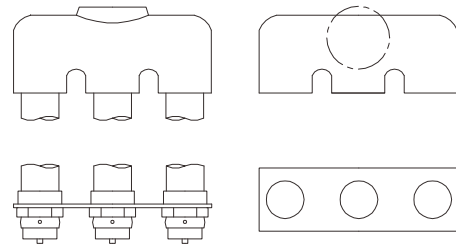


## Flush fire pump test connection (Less valve)

Fire pump test connection (Less valve) is used to conduct flow test on fire pump, and each individual outlet is fitted with adapter rather than valve when assembly. For flush type, the body is concealed behind the wall.



- Certificate: ISO
- Standard: NFPA 14 / 20
- Feature: Flush outlet
- W. pressure: 175 psi
- Surface: Polished / chrome plated



### Main parts and material

<b>Body</b>	Cast brass, pipe thread for adapter	<b>Snoot (Adapter)</b>	Cast brass, with NPT inlet x NH outlet
<b>Cap</b>	Brass, pin lug, with chain	<b>Wall plate</b>	Brass, special lettering for identification

### Available size

Size	Pump capacity (GPM)	Way of outlet	Body pattern	Inlet	Outlet	Working pressure (psi)	Ref. No.
4" x 2-1/2"	500	2-way	Straight	4" NPT, F	(2) 2-1/2" NH, M	175	F1101
4" x 2-1/2"	500	2-way	Angle	4" NPT, F	(2) 2-1/2" NH, M	175	F1102
6" x 2-1/2"	500	2-way	Straight	6" NPT, F	(2) 2-1/2" NH, M	175	F1103
6" x 2-1/2"	500	2-way	Angle	6" NPT, F	(2) 2-1/2" NH, M	175	F1104
6" x 2-1/2"	750	3-way	Straight	6" NPT, F	(3) 2-1/2" NH, M	175	F1105
6" x 2-1/2"	750	3-way	Angle	6" NPT, F	(3) 2-1/2" NH, M	175	F1106
6" x 2-1/2"	1000	4-way	Straight	6" NPT, F	(4) 2-1/2" NH, M	175	F1107
6" x 2-1/2"	1000	4-way	Angle	6" NPT, F	(4) 2-1/2" NH, M	175	F1108